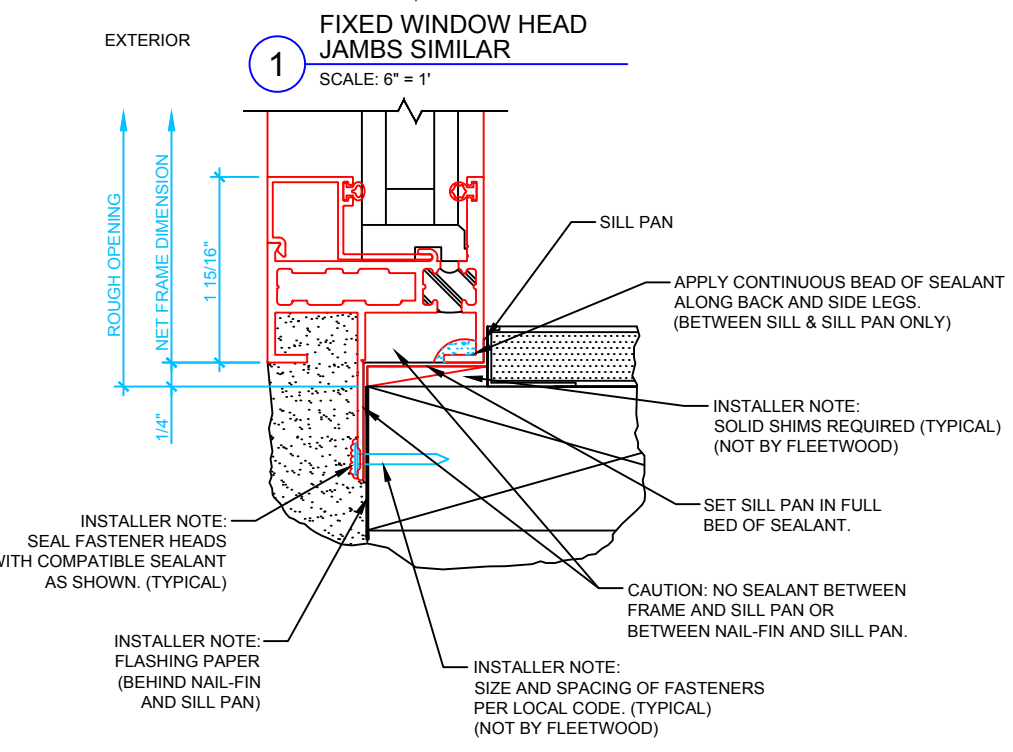
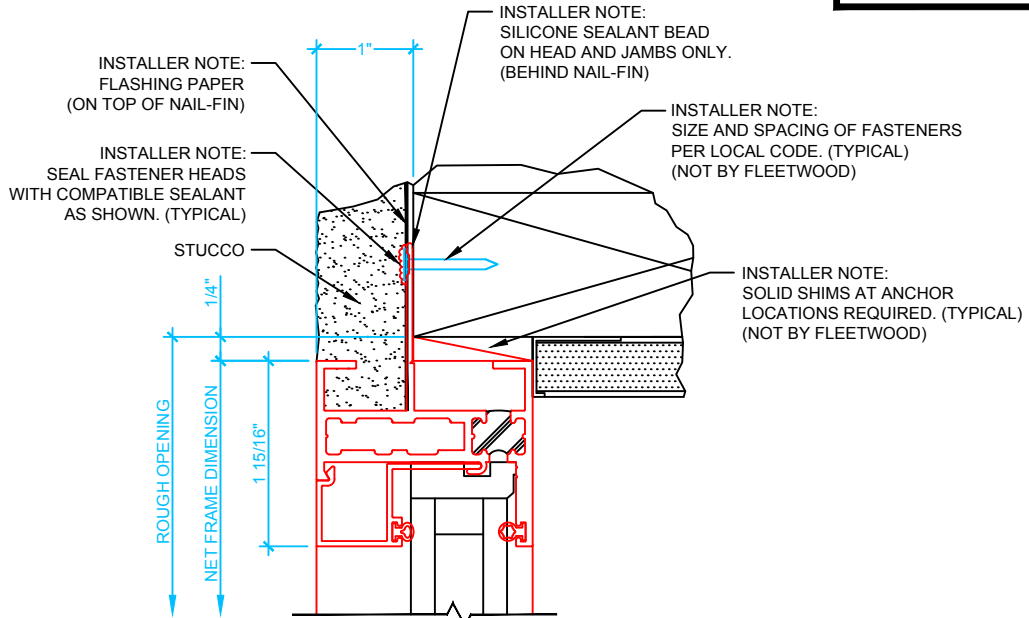


SERIES 250-T

ANCHOR LOCATION WORKSHEET

NAIL-ON FRAME

FRAME ANCHOR CHECKLIST	
FASTENER TYPE	
MINIMUM EMBEDMENT	
MINIMUM EDGE DISTANCE	
ANCHOR LOCATIONS	
FROM ENDS	
ON CENTER	



2 FIXED WINDOW SILL
SCALE: 6" = 1'

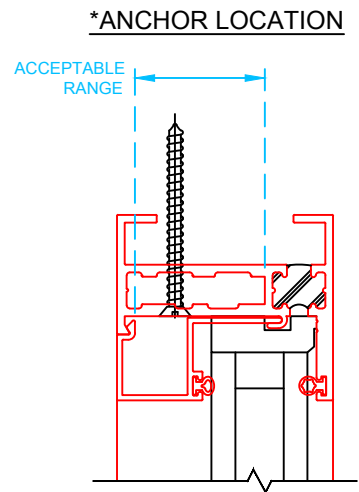
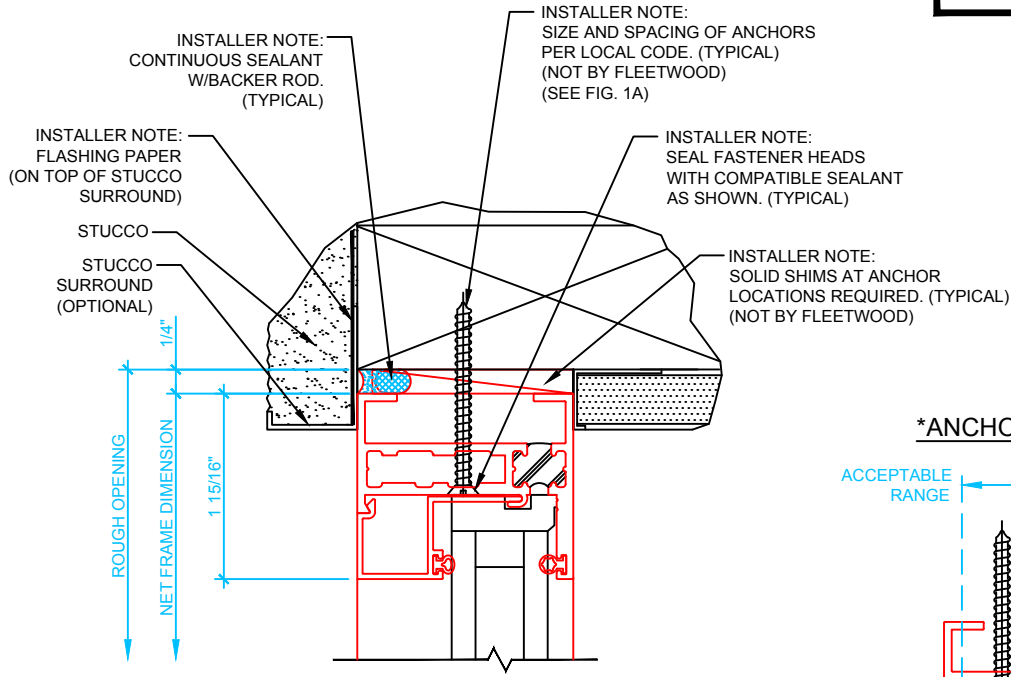
SILL DISCLAIMER: IT IS THE MANUFACTURERS DESIRE FOR THE INSTALLER TO **NOT** PIERCE THE SILL. IN SOME CASES THE CODE OR SPECIFICATIONS REQUIRE SUCH. IN THESE CASES THE INSTALLER IS RESPONSIBLE TO SEAL THESE BREACHES.

SERIES 250-T

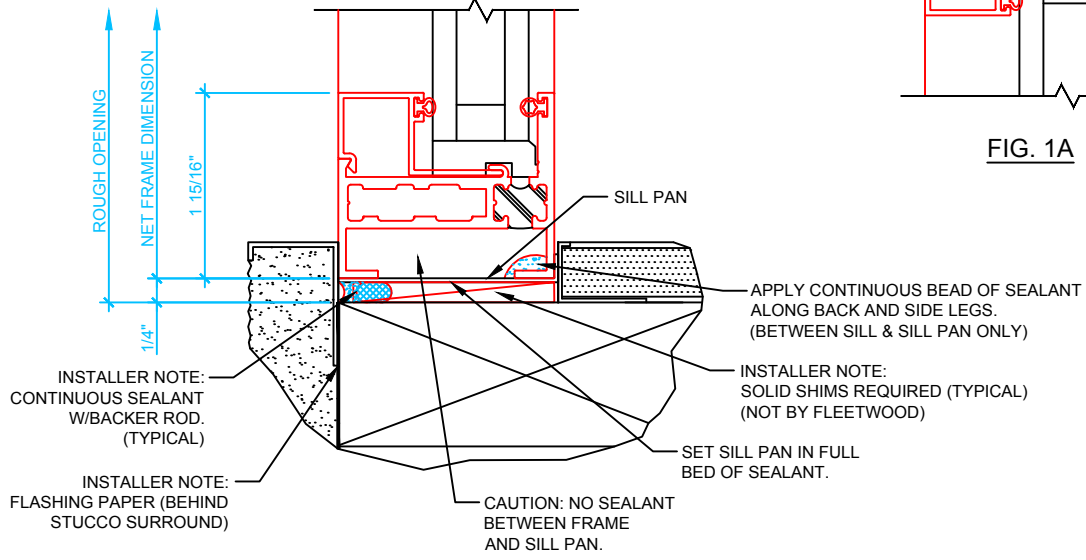
ANCHOR LOCATION WORKSHEET

BLOCK FRAME

FRAME ANCHOR CHECKLIST	
FASTENER TYPE	
MINIMUM EMBEDMENT	
MINIMUM EDGE DISTANCE	
ANCHOR LOCATIONS	
FROM ENDS	
ON CENTER	



1 FIXED WINDOW HEAD
JAMBS SIMILAR
SCALE: 6" = 1'



2 FIXED WINDOW SILL
SCALE: 6" = 1'

FIG. 1A

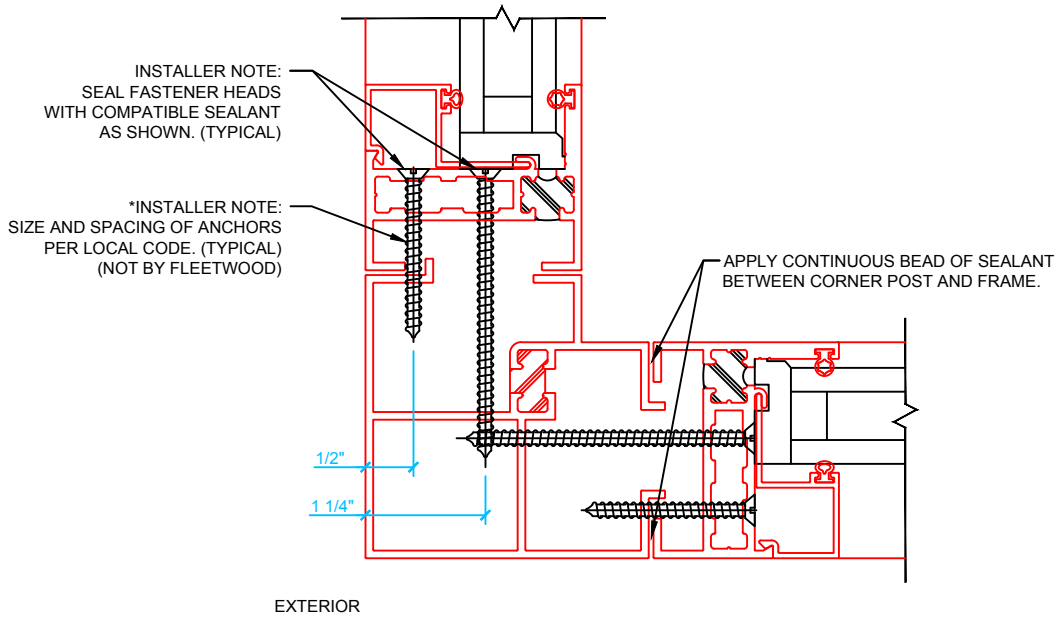
NOTES: 1. *ANCHOR LOCATION: INSTALLER RESPONSIBLE TO ENSURE ANCHORS MAINTAIN EDGE DISTANCE ON STRUCTURE.
2. SILL DISCLAIMER: IT IS THE MANUFACTURERS DESIRE FOR THE INSTALLER TO **NOT** PIERCE THE SILL. IN SOME CASES THE CODE OR SPECIFICATIONS REQUIRE SUCH. IN THESE CASES THE INSTALLER IS RESPONSIBLE TO SEAL THESE BREACHES.

SERIES 250-T

ANCHOR LOCATION WORKSHEET

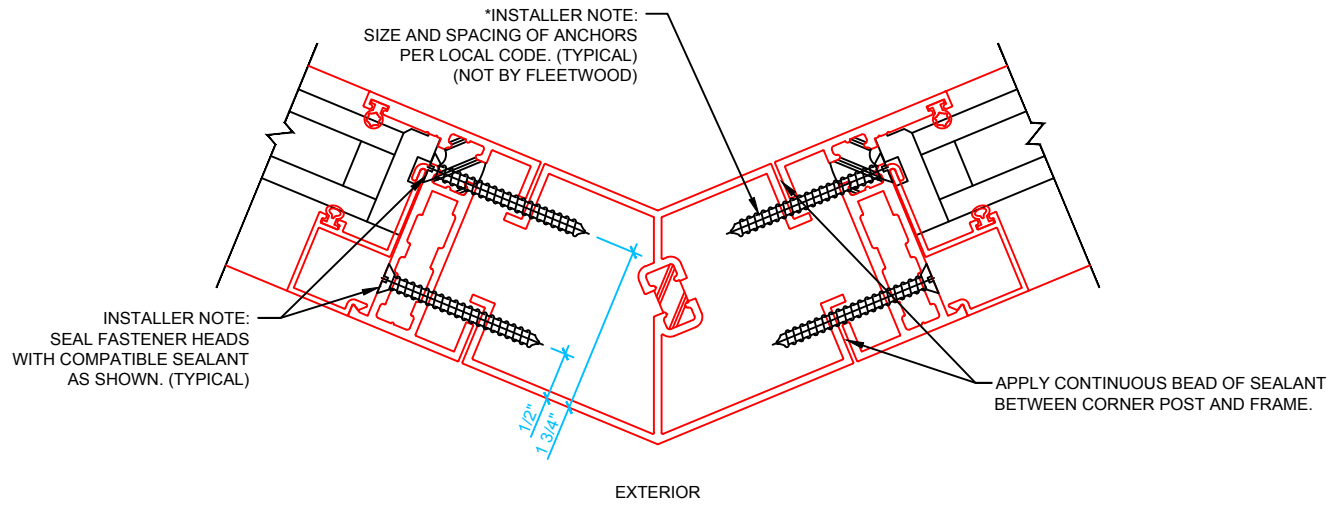
CORNER POST

FRAME ANCHOR CHECKLIST	
FASTENER TYPE	
MINIMUM EMBEDMENT	
MINIMUM EDGE DISTANCE	
ANCHOR LOCATIONS	
FROM ENDS	
ON CENTER	



EXTERIOR

1 90° CORNER POST
SCALE: 6" = 1'



EXTERIOR

2 45° CORNER POST
SCALE: 6" = 1'

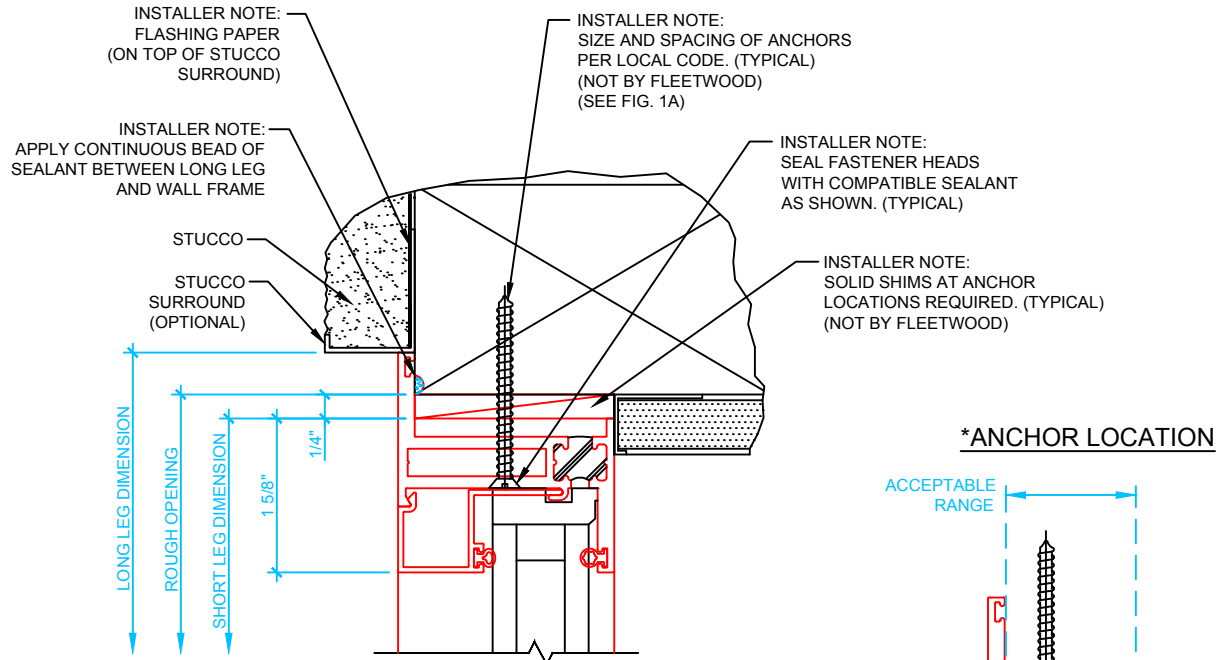
- *NOTES:
1. 90° CORNER POST FASTENER LENGTHS: APPROX. 1.75" AND 3".
 2. 45° CORNER POST FASTENER LENGTHS: APPROX. 1.75".

SERIES 250-T

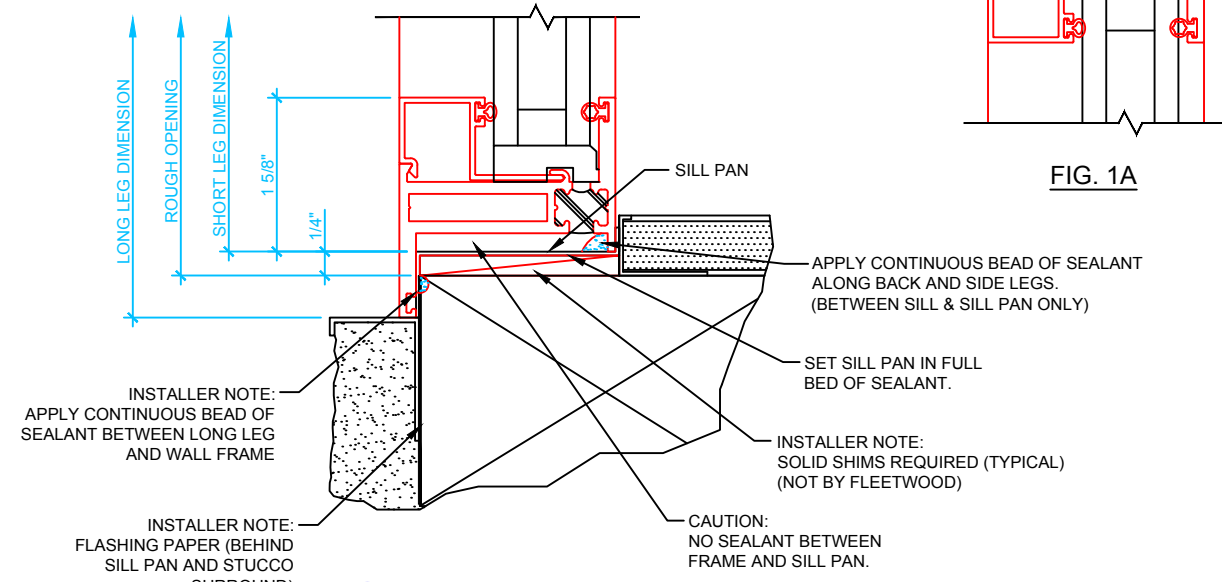
ANCHOR LOCATION WORKSHEET

UNEQUAL FRAME

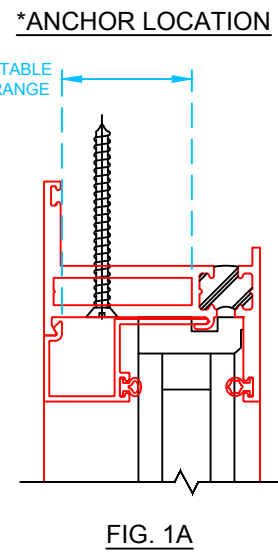
FRAME ANCHOR CHECKLIST	
FASTENER TYPE	
MINIMUM EMBEDMENT	
MINIMUM EDGE DISTANCE	
ANCHOR LOCATIONS	
FROM ENDS	
ON CENTER	



1 FIXED WINDOW HEAD JAMBS SIMILAR
SCALE: 6" = 1"



2 FIXED WINDOW SILL
SCALE: 6" = 1"



NOTES: 1. *ANCHOR LOCATION: INSTALLER RESPONSIBLE TO ENSURE ANCHORS MAINTAIN EDGE DISTANCE ON STRUCTURE.
 2. SILL DISCLAIMER: IT IS THE MANUFACTURERS DESIRE FOR THE INSTALLER TO **NOT** PIERCE THE SILL. IN SOME CASES THE CODE OR SPECIFICATIONS REQUIRE SUCH. IN THESE CASES THE INSTALLER IS RESPONSIBLE TO SEAL THESE BREACHES.