

SERIES 3000-T

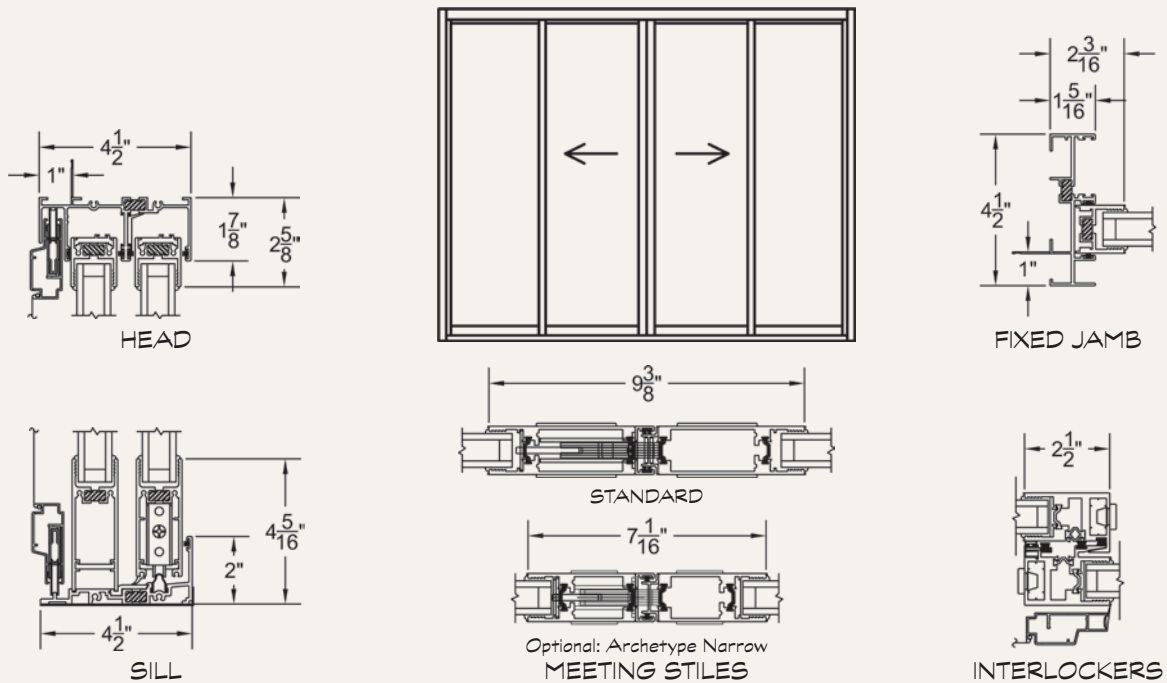
“THERMAL FRAME” SLIDING DOOR



Photo by JoeFletcher.com

TYPICAL CONFIGURATIONS	← MAX PANEL WIDTH	↑ MAX PANEL HEIGHT	☀ EXAMPLE SHGC	⚙ EXAMPLE U-FACTOR
<ul style="list-style-type: none"> OX, XO, OXO, OOX, XOO, XO, OXXO, XOOX. 	'6'	'12'	² NFRC: 0.21 ³ S.P.A.: 0.23	² NFRC: 0.34 ³ S.P.A.: 0.28

ELEVATION VIEW:
OXIXO CONFIGURATION



¹Max width and height are not necessarily available in combination.

²Specimen size: Nom. 79" x 79".

³Simulated Performance Alternative size: 192" x 120" OXIXO using SNX62/27-IS20/Argon Warm Edge glass.





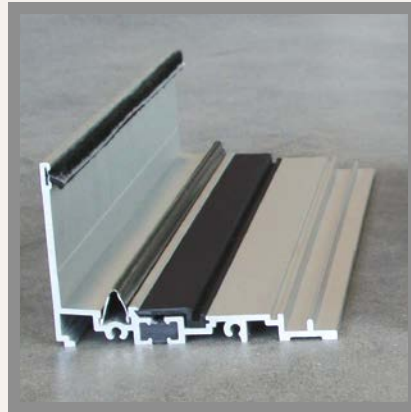
DESIGN NOTES

- More energy efficient version of the 3000.
- Available 12' tall.



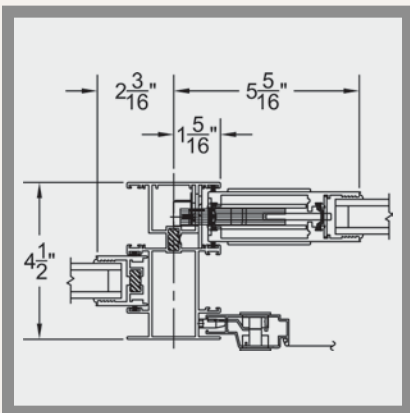
“Thermal Frame” Extrusions:

The ultimate combination of structural integrity and energy efficiency. Each extrusion was engineered to provide the precise location of the polyurethane so performance was achieved and aesthetics were not compromised. When the Series 3000-T is closed, you cannot tell the extrusions are insulated. Cheaper products have made no attempt to hide the black lines.



Stainless Track Insert:

All Fleetwood sliding doors come standard with an engineered track and roller marriage. Cheaper doors offer a steel cover that curls up over time since the convex/concave relationship is compromised. In contrast, track inserts get stronger as weight bears down and the concavity of the roller is in perfect harmony to the convex shape of the insert. The image above shows the optional High Water sill (available on the Series 3000-T and 3000). The standard sill is 2".



Customization:

We offer an option on the Series 3000-T which allows a center sliding panel: it is called a false jamb (shown above). This same extrusion can be used as an “in frame” mullion between a series of fixed panels to create a large opening, i.e. OOOXOOOO. See page 14 for additional information on optional locking hardware.



Optional Keyed Lock:

Fleetwood’s proprietary Archetype Hardware is offered with an exterior keyed lock. This flush cylinder allows panels to flush stack and bypass. We have chosen a commercial grade, 5-pin, “C” keyway lock by Schlage. This keyed lock is offered on the following products: 3070, 3070-T, 3070-HI, 3050, 3000-T, 3000, and 3400P.