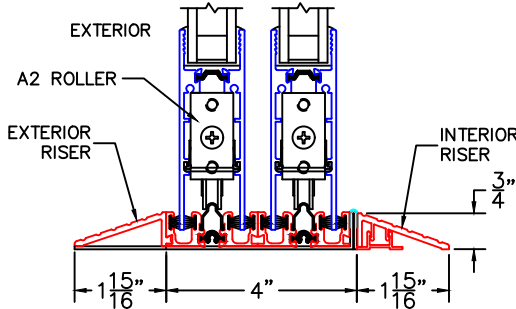


(USE RULER TO SCALE DIMENSIONS IN INCHES)
SCALE: 1/4

A2 ROLLER AND SILL RISER OPTIONS

①

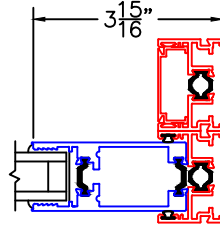
A2 ROLLERS AND EXT./INT. SILL RISERS



ALTERNATE FIXED STILES

②

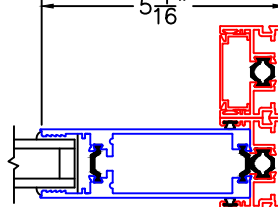
ARCHETYPE NARROW FIXED STILE



EXTERIOR

②A

ARCHETYPE FIXED STILE

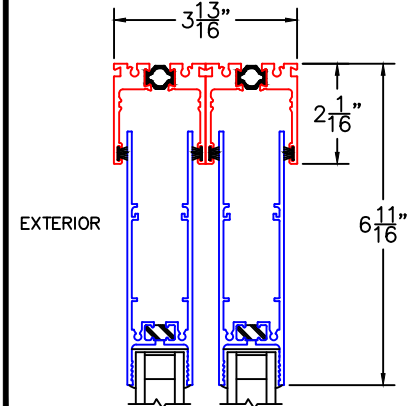


EXTERIOR

BOTTOM RAIL USED AS TOP RAIL

③

TWO TRACK HEAD SHOWN

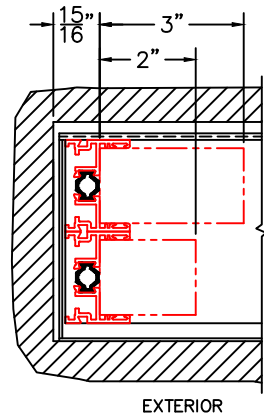


POCKET WALL OPTIONS

(DETAILS 6 & 7 SHOWN WITH NO SIGHTLINE INTERLOCKER)

④

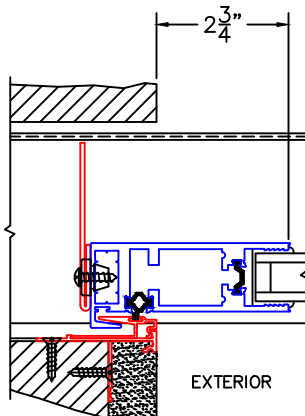
OPTIONAL POCKET JAMB WITH HEAD BUMPERS



EXTERIOR

⑤

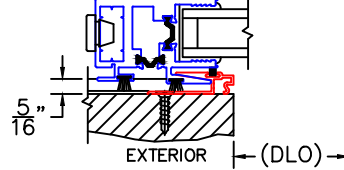
2 3/4" SIGHTLINE INTERLOCKER



EXTERIOR

⑥

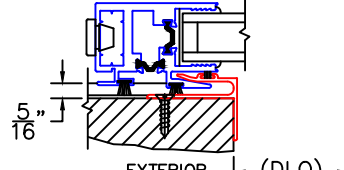
J-POST POCKET INTERLOCKER



EXTERIOR (DLO)

⑦

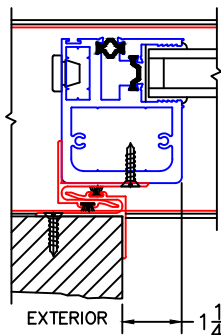
L-TYPE POCKET INTERLOCKER



EXTERIOR (DLO)

⑧

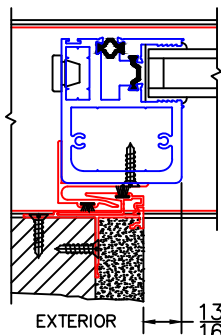
L-TYPE POCKET INTERLOCKER WITH REVERSE HP INTERLOCKER



EXTERIOR

⑨

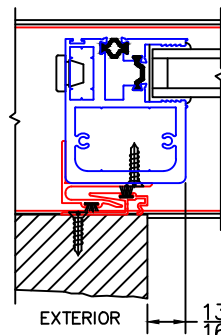
2-PIECE POCKET INTERLOCKER WITH REVERSE HP INTERLOCKER



EXTERIOR

⑩

J-POST POCKET INTERLOCKER WITH REVERSE HP INTERLOCKER

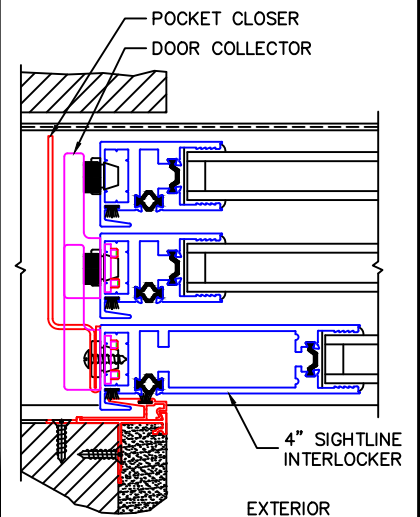


EXTERIOR

DOOR COLLECTOR OPTION

⑪

DOOR COLLECTOR W/ POCKET CLOSER

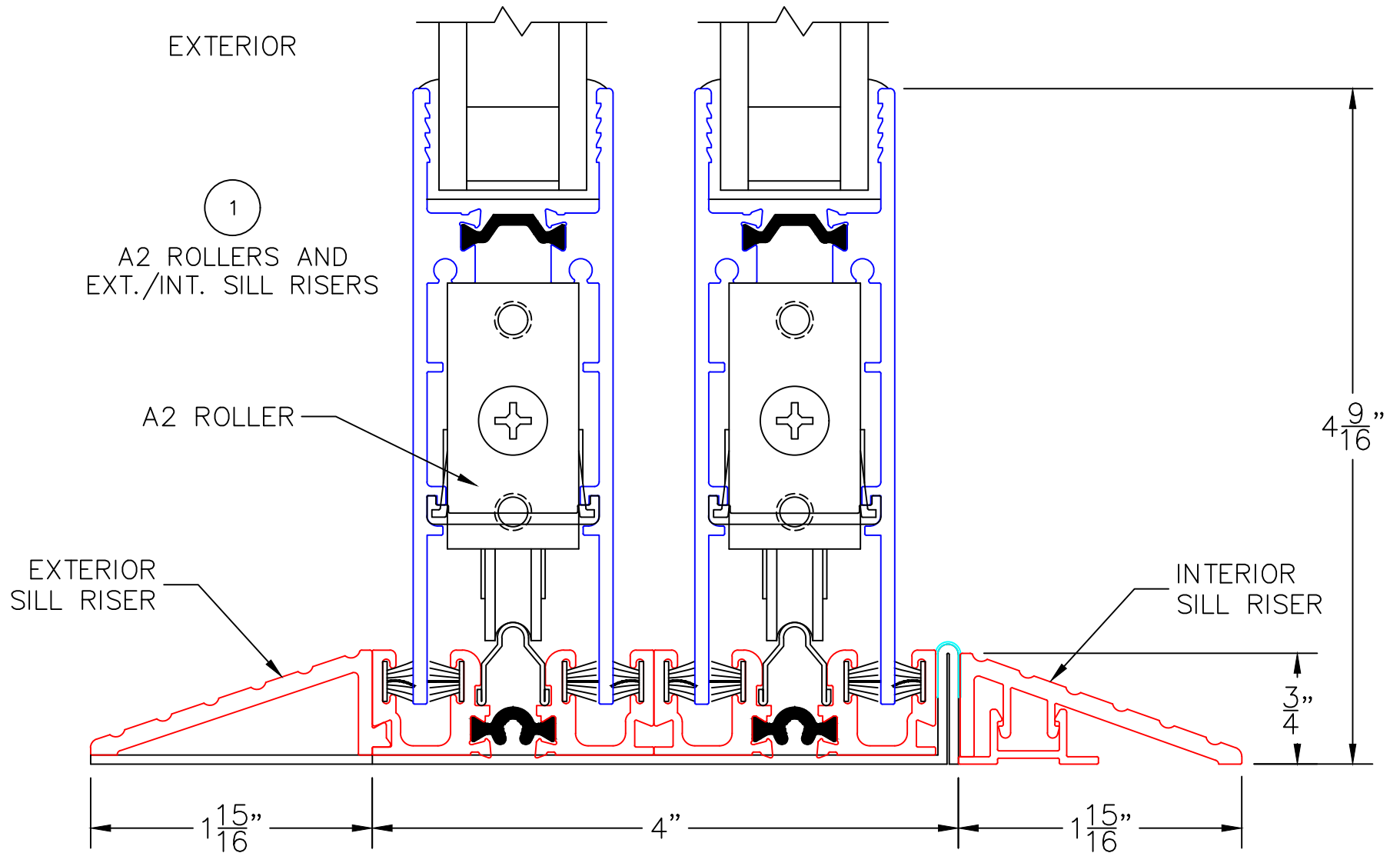


EXTERIOR

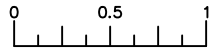
-GLASS PENETRATION: 11/16"

0 0.5 1
(USE RULER TO SCALE DIMENSIONS IN INCHES)
SCALE: FULL

A2 ROLLER AND SILL RISER OPTIONS



ALTERNATE FIXED STILE

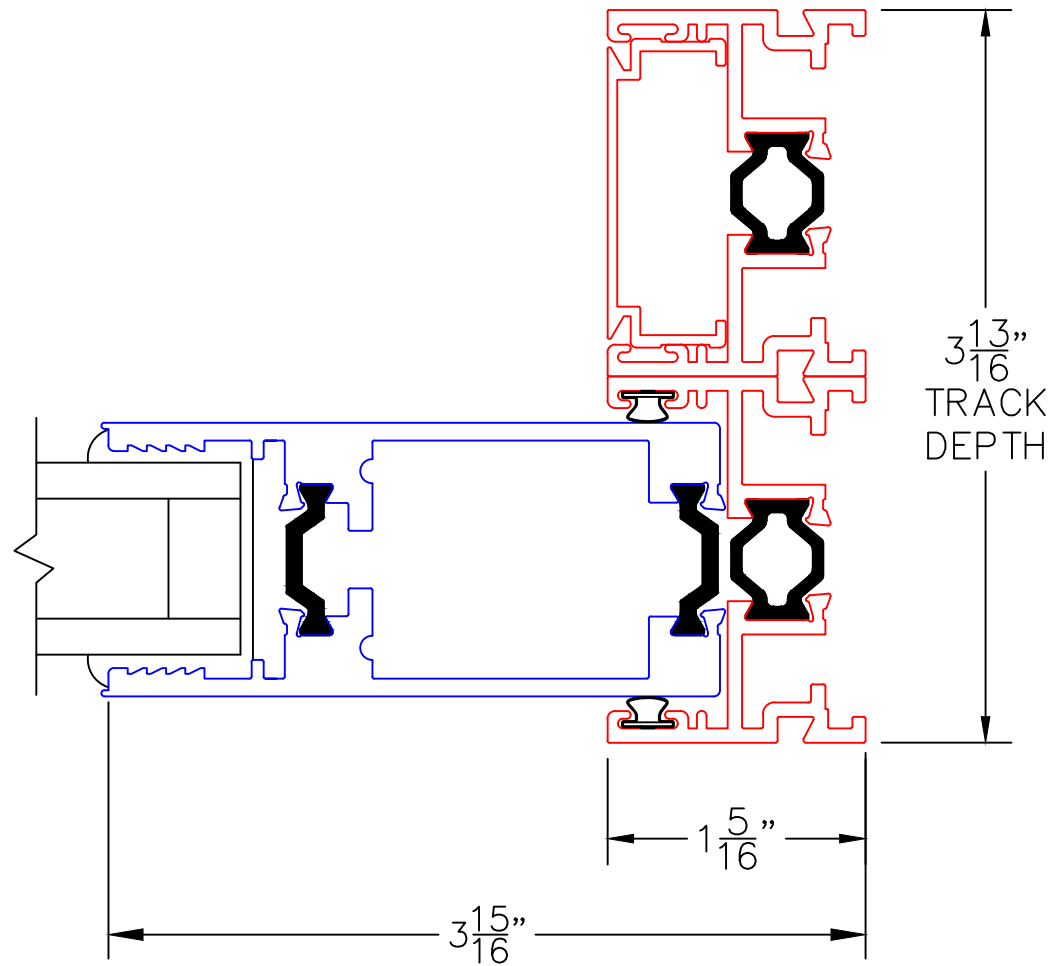


(USE RULER TO SCALE DIMENSIONS IN INCHES)

SCALE: FULL

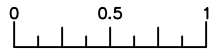
2

ARCHETYPE NARROW FIXED STILE



EXTERIOR

ALTERNATE FIXED STILE

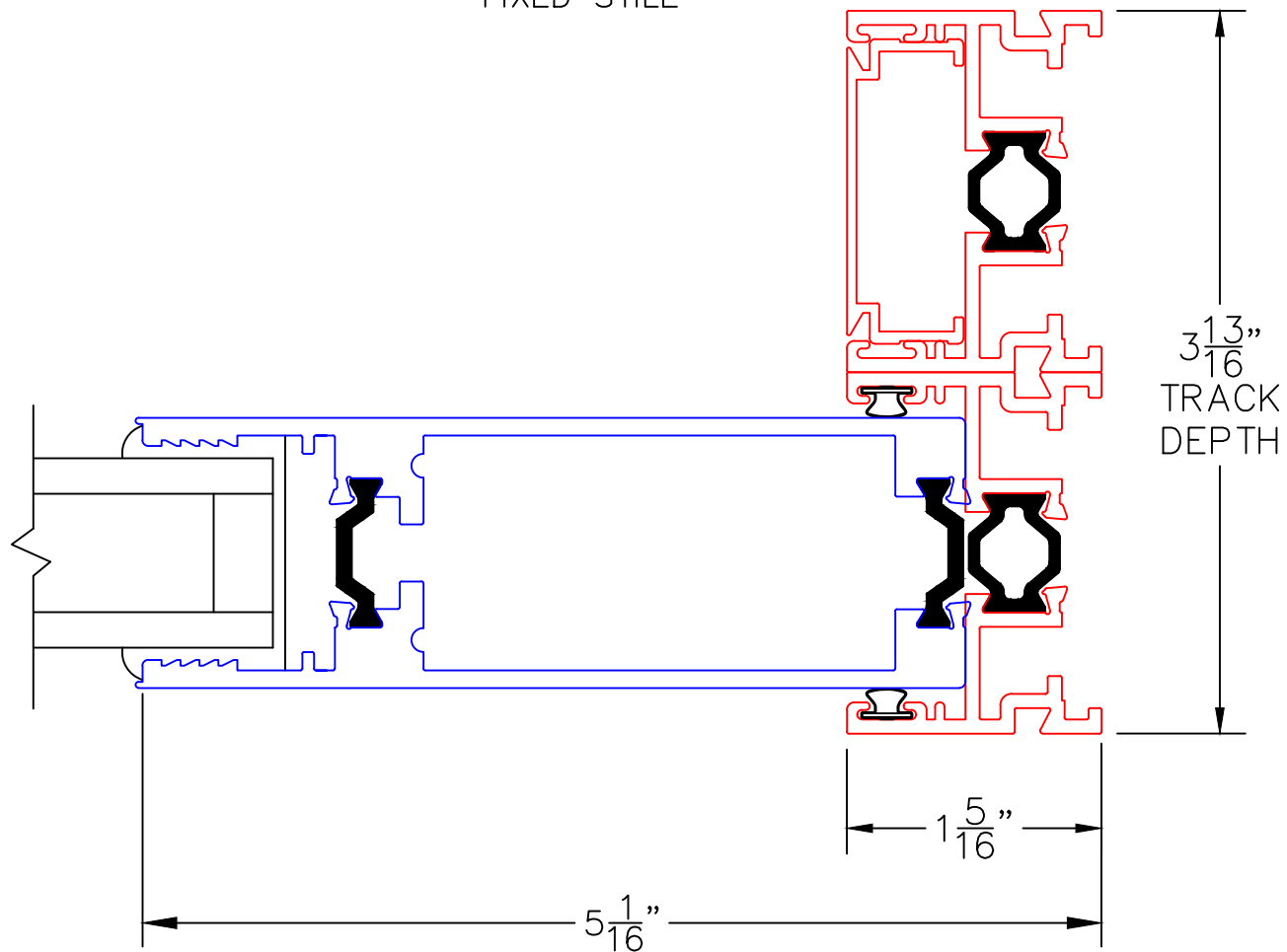


(USE RULER TO SCALE DIMENSIONS IN INCHES)

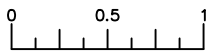
SCALE: FULL

2A

ARCHETYPE
FIXED STILE



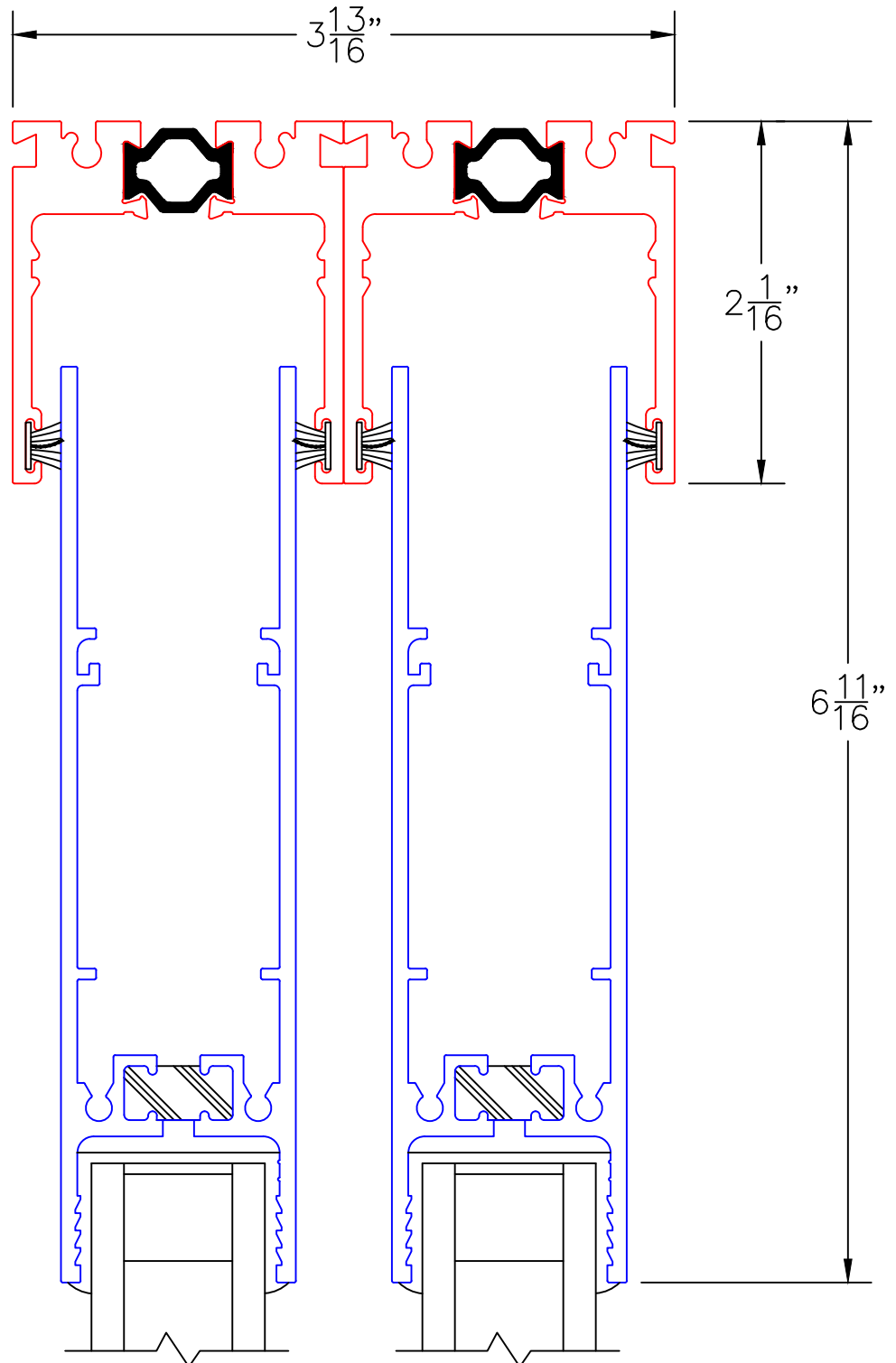
EXTERIOR



(USE RULER TO SCALE DIMENSIONS IN INCHES)

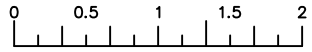
SCALE: FULL

BOTTOM RAIL AS
TOP RAIL OPTION



3
TWO TRACK
HEAD SHOWN

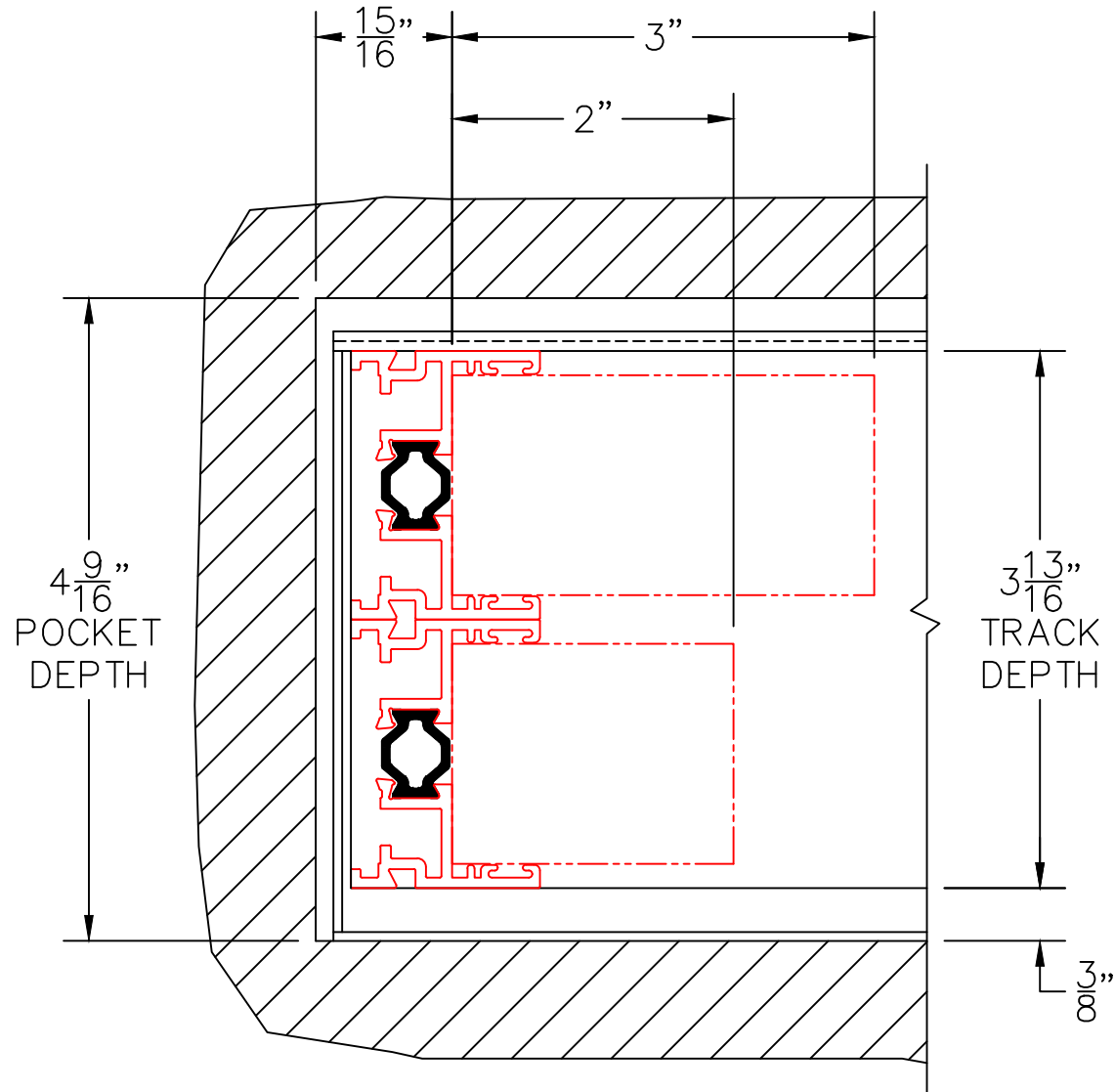
EXTERIOR



(USE RULER TO SCALE DIMENSIONS IN INCHES)

SCALE: 3/4

POCKET WALL OPTIONS



4

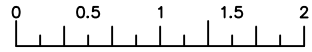
OPTIONAL POCKET JAMB
WITH HEAD BUMPERS

$4\frac{9}{16}$ "
POCKET
DEPTH

$3\frac{13}{16}$ "
TRACK
DEPTH

$\frac{3}{8}$ "

EXTERIOR



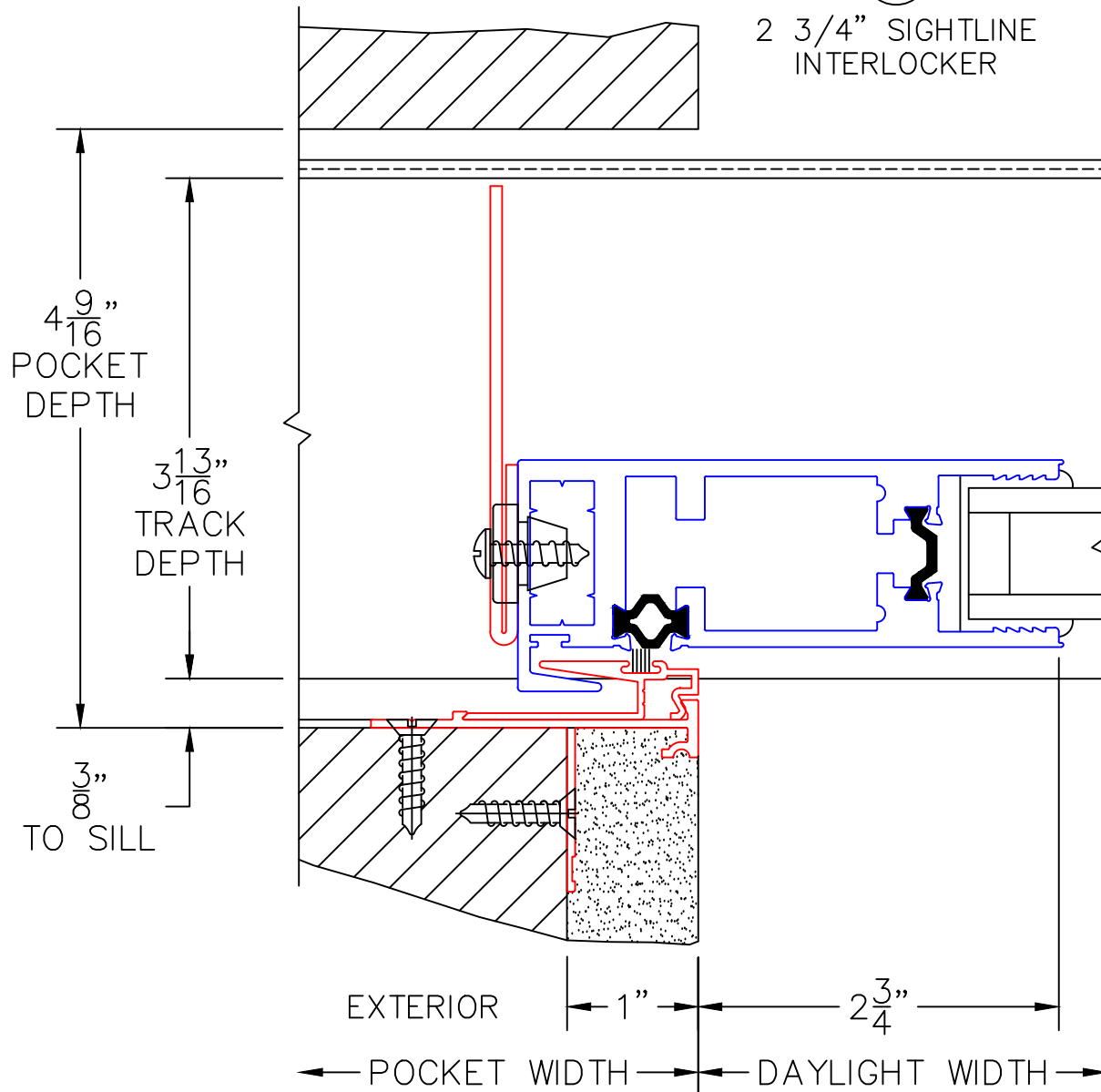
(USE RULER TO SCALE DIMENSIONS IN INCHES)

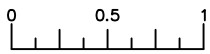
SCALE: 3/4

POCKET WALL OPTIONS

5

2 3/4" SIGHTLINE
INTERLOCKER





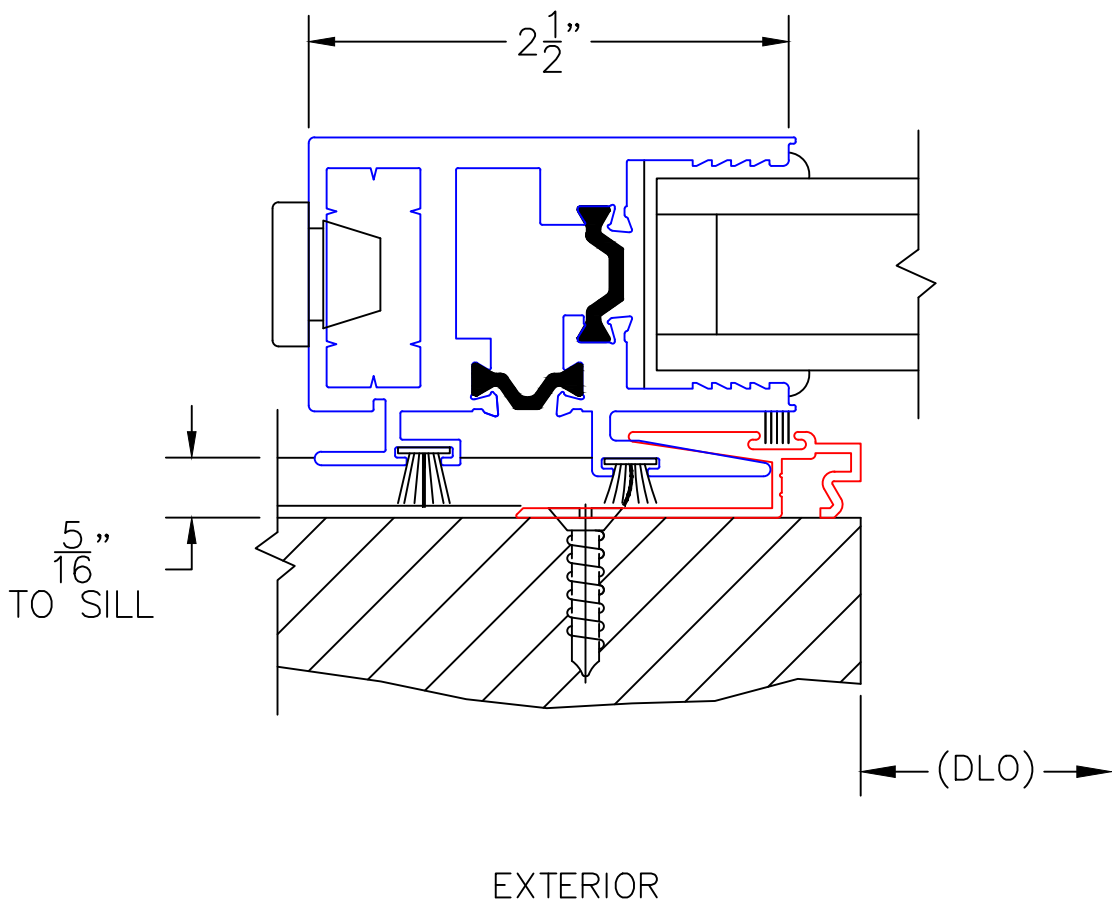
(USE RULER TO SCALE DIMENSIONS IN INCHES)

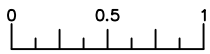
SCALE: FULL

POCKET WALL OPTIONS

6

J-POCKET
INTERLOCKER





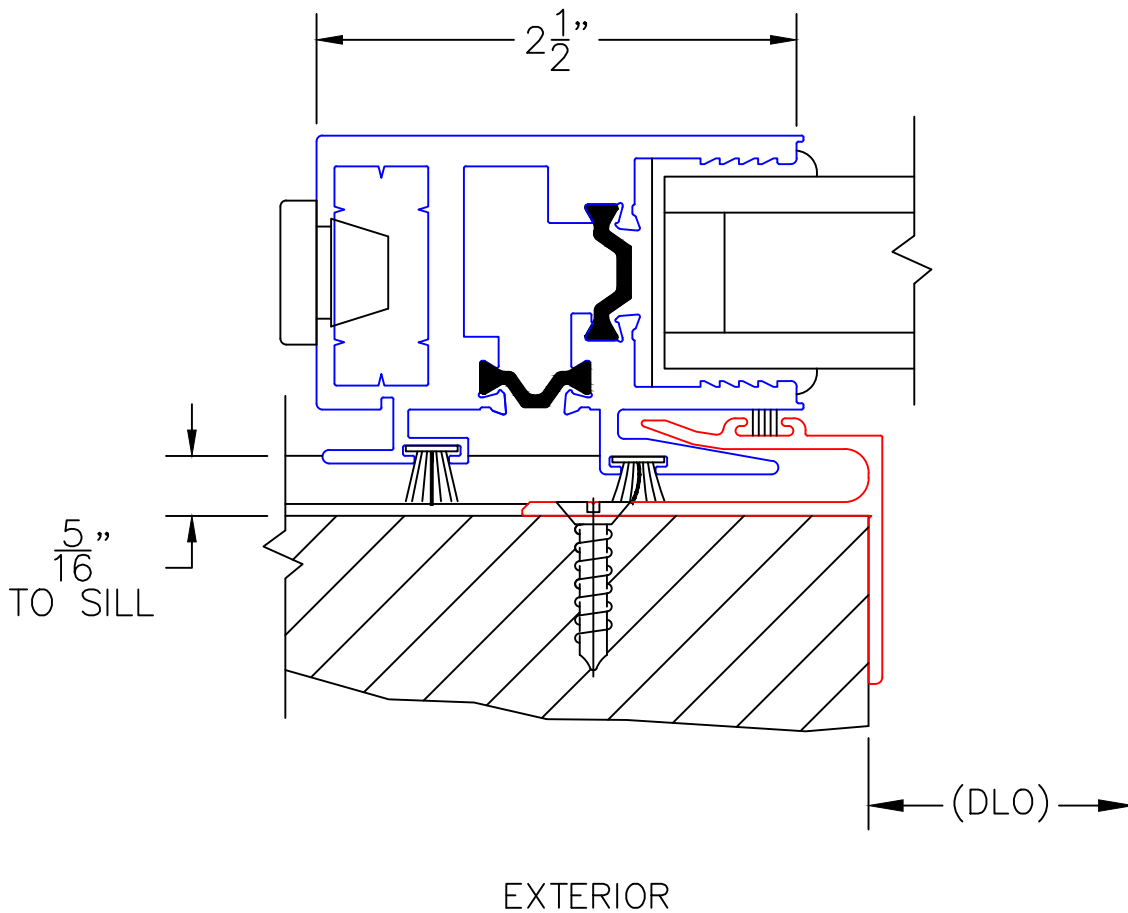
(USE RULER TO SCALE DIMENSIONS IN INCHES)

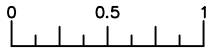
SCALE: FULL

POCKET WALL OPTIONS

7

L-TYPE POCKET
INTERLOCKER





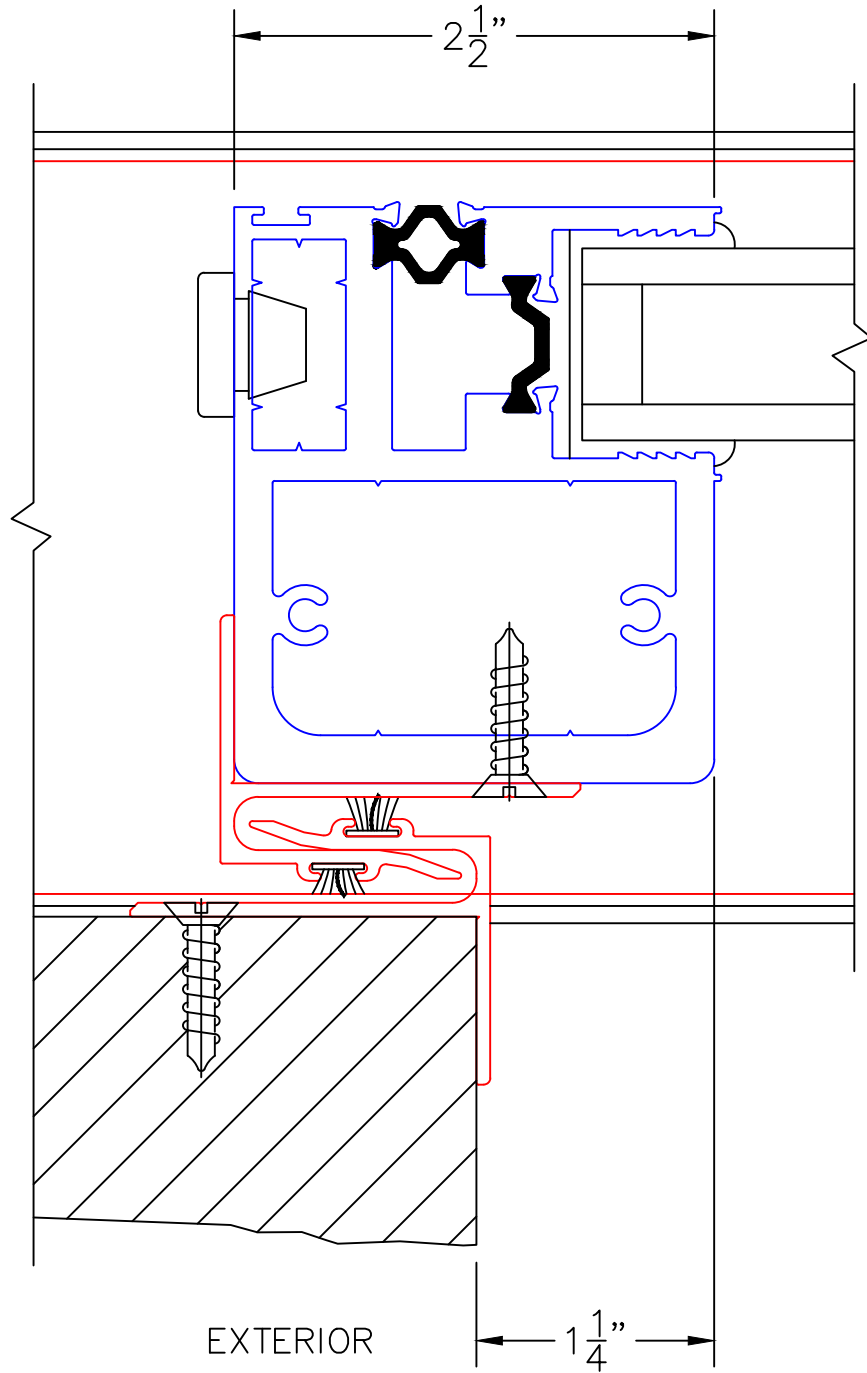
(USE RULER TO SCALE DIMENSIONS IN INCHES)

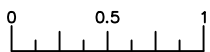
SCALE: FULL

POCKET WALL OPTIONS

8

L-TYPE POCKET
INTERLOCKER WITH
REVERSE HP INTERLOCKER





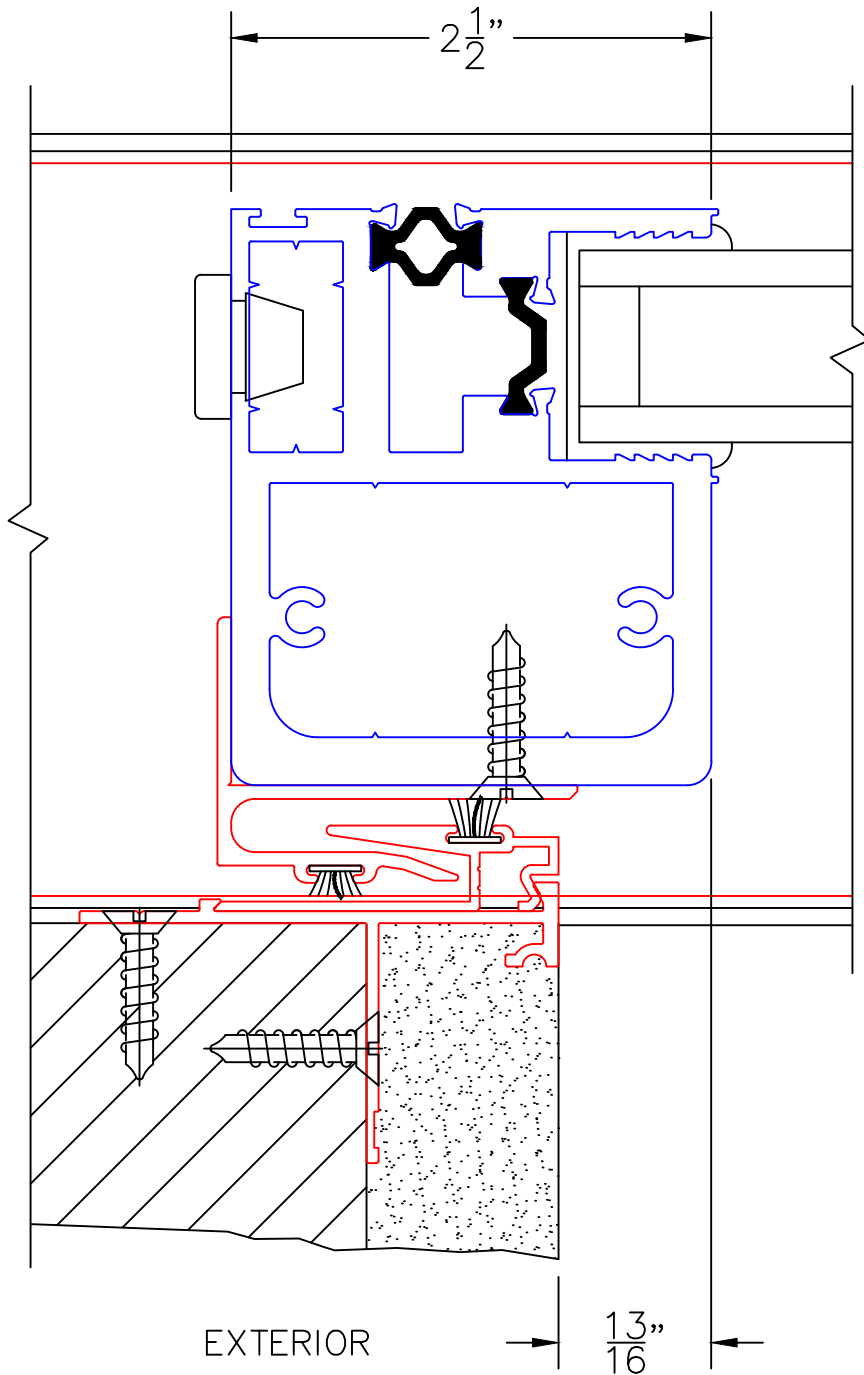
(USE RULER TO SCALE DIMENSIONS IN INCHES)

SCALE: FULL

POCKET WALL OPTIONS

9

2-PIECE POCKET
INTERLOCKER WITH
REVERSE HP INTERLOCKER

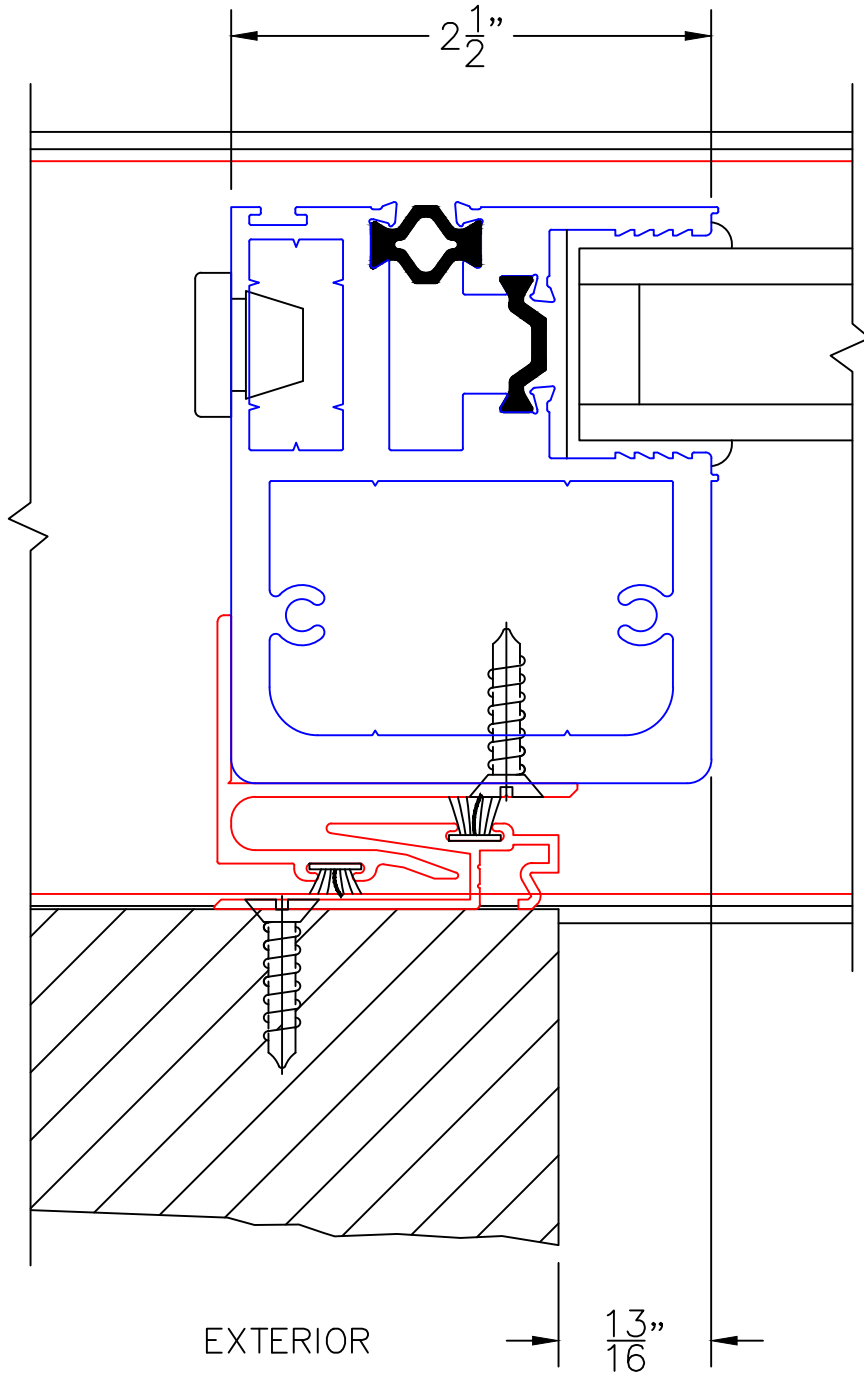


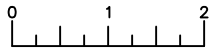
0 0.5 1
(USE RULER TO SCALE DIMENSIONS IN INCHES)
SCALE: FULL

POCKET WALL OPTIONS

10

J-POST POCKET
INTERLOCKER WITH
REVERSE HP INTERLOCKER





(USE RULER TO SCALE DIMENSIONS IN INCHES)

SCALE: 1/2

DOOR COLLECTOR OPTION

11

DOOR COLLECTOR
W/ POCKET CLOSER

