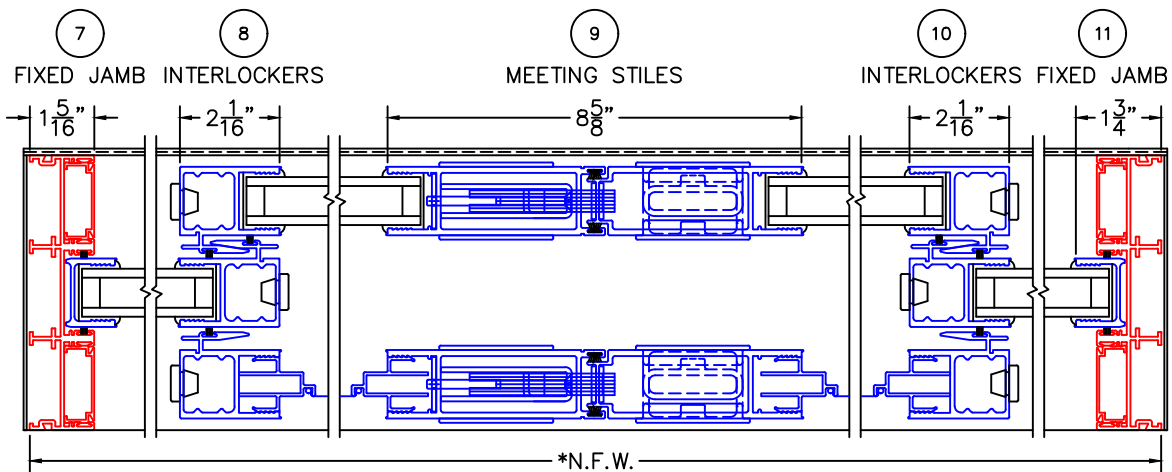
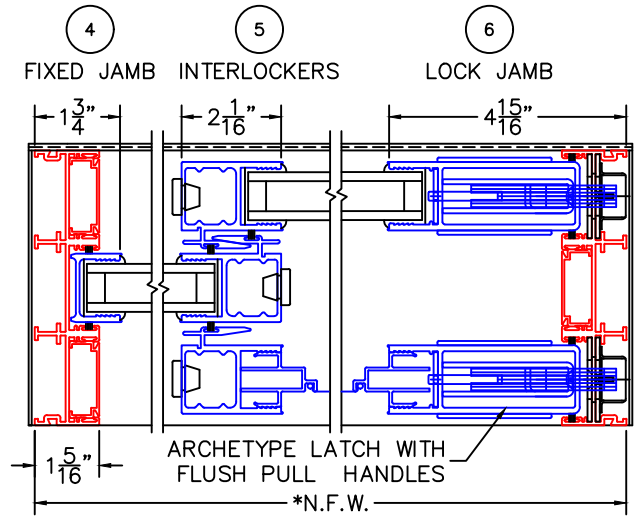
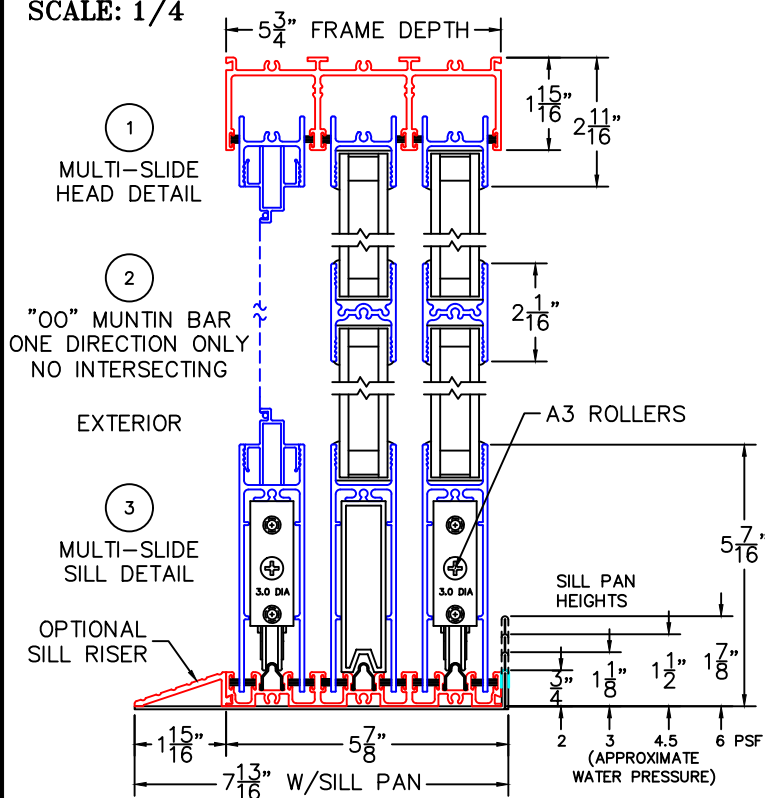
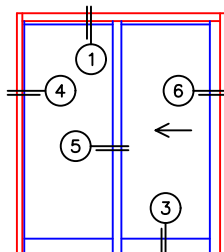


(USE RULER TO SCALE DIMENSIONS IN INCHES) **OX DOOR**
SCALE: 1/4

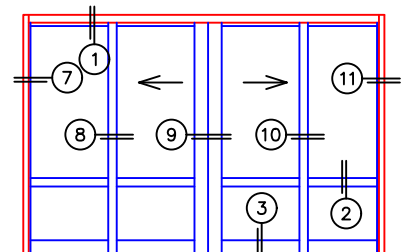
MULTI-SLIDE DOOR DETAILS WITH SCREENS



NOTE: CENTERLINES ARE NOT DIVIDED EQUALLY; CONFIRM CENTERLINES WHEN REQUIRED.

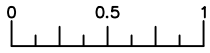


OX DOOR



OXIXO DOOR

- GLASS PENETRATION: 11/16"
- *NET FRAME WIDTH DOES NOT INCLUDE SILL PAN.
- SILL PAN EXTENDS 1/8" BEYOND EACH JAMB.
- PLAN VIEW DOES NOT SHOW SILL RISER.
- FOR ADDITIONAL OPTIONS AND UPGRADES SEE DRAWINGS 3070-07, 3070-08 & 3070-11.
- EXTERIOR RATED PRODUCTS HAVE WEEP SLOTS ON HORIZONTAL SILLS.



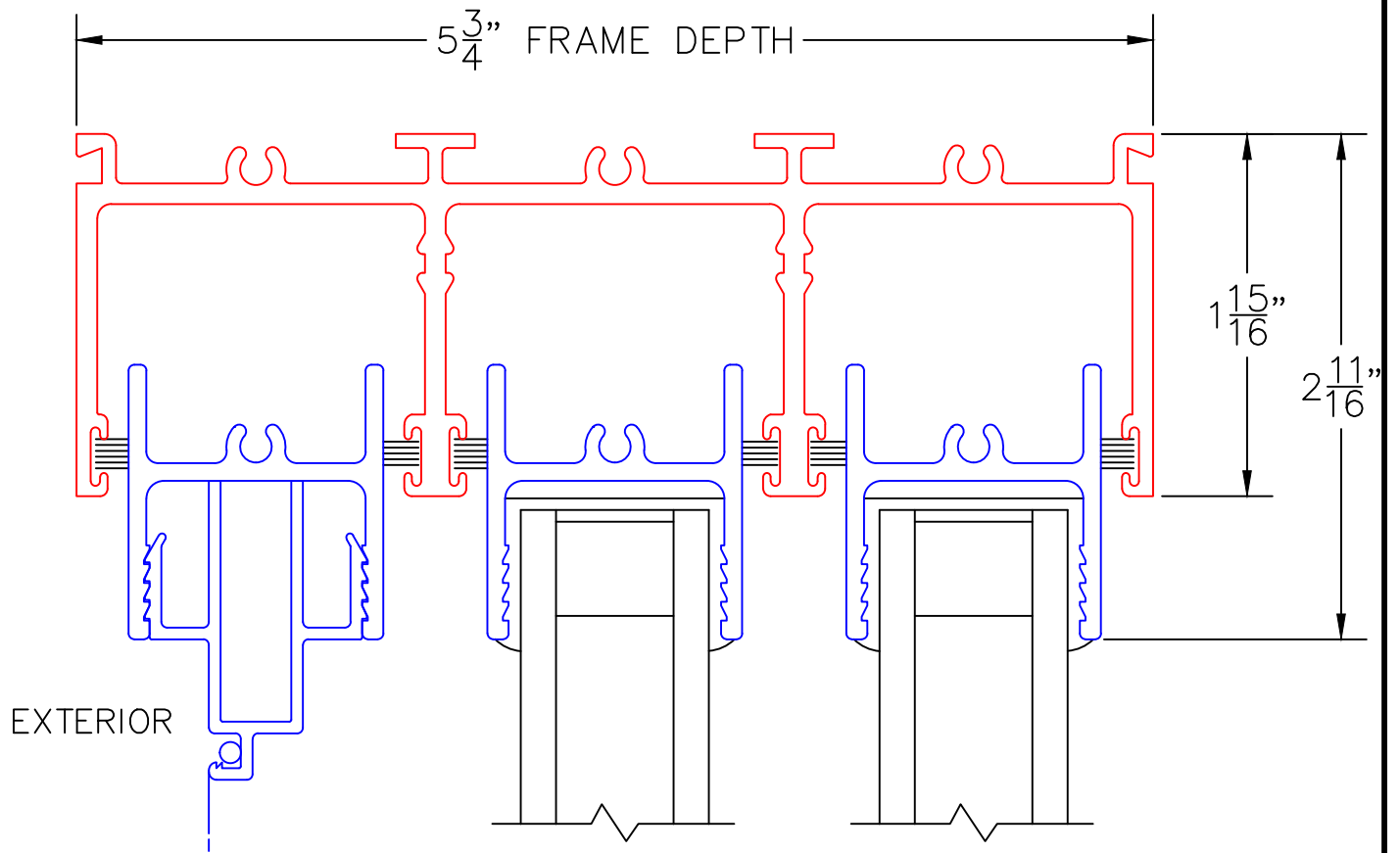
(USE RULER TO SCALE DIMENSIONS IN INCHES)

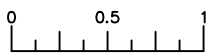
SCALE: FULL

OX DOOR

1

MULTI-SLIDE
HEAD DETAIL





(USE RULER TO SCALE DIMENSIONS IN INCHES)

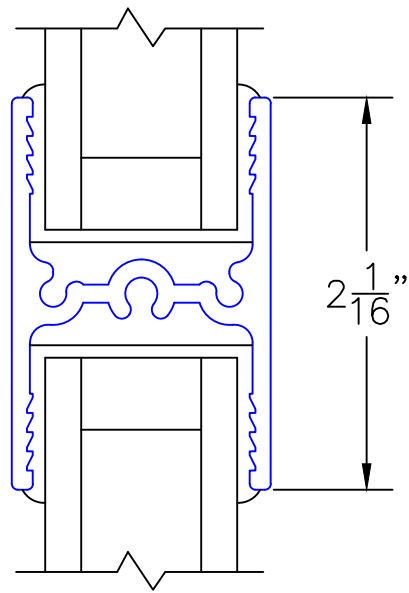
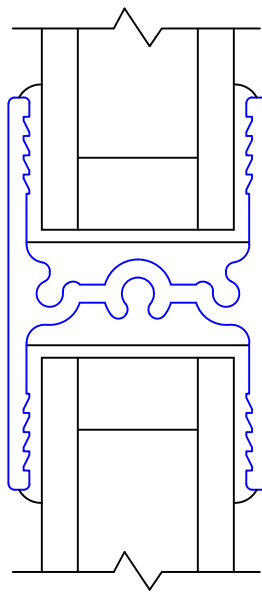
SCALE: FULL

OX DOOR

2

"00" MUNTIN BAR
ONE DIRECTION ONLY
NO INTERSECTING

EXTERIOR



0 0.5 1
(USE RULER TO SCALE DIMENSIONS IN INCHES)
SCALE: FULL

OX DOOR

EXTERIOR

3
MULTI-SLIDE
SILL DETAIL

A3 ROLLERS

3.0 DIA

3.0 DIA

OPTIONAL
SILL RISER

SILL PAN
HEIGHTS

5 ⁷/₁₆"

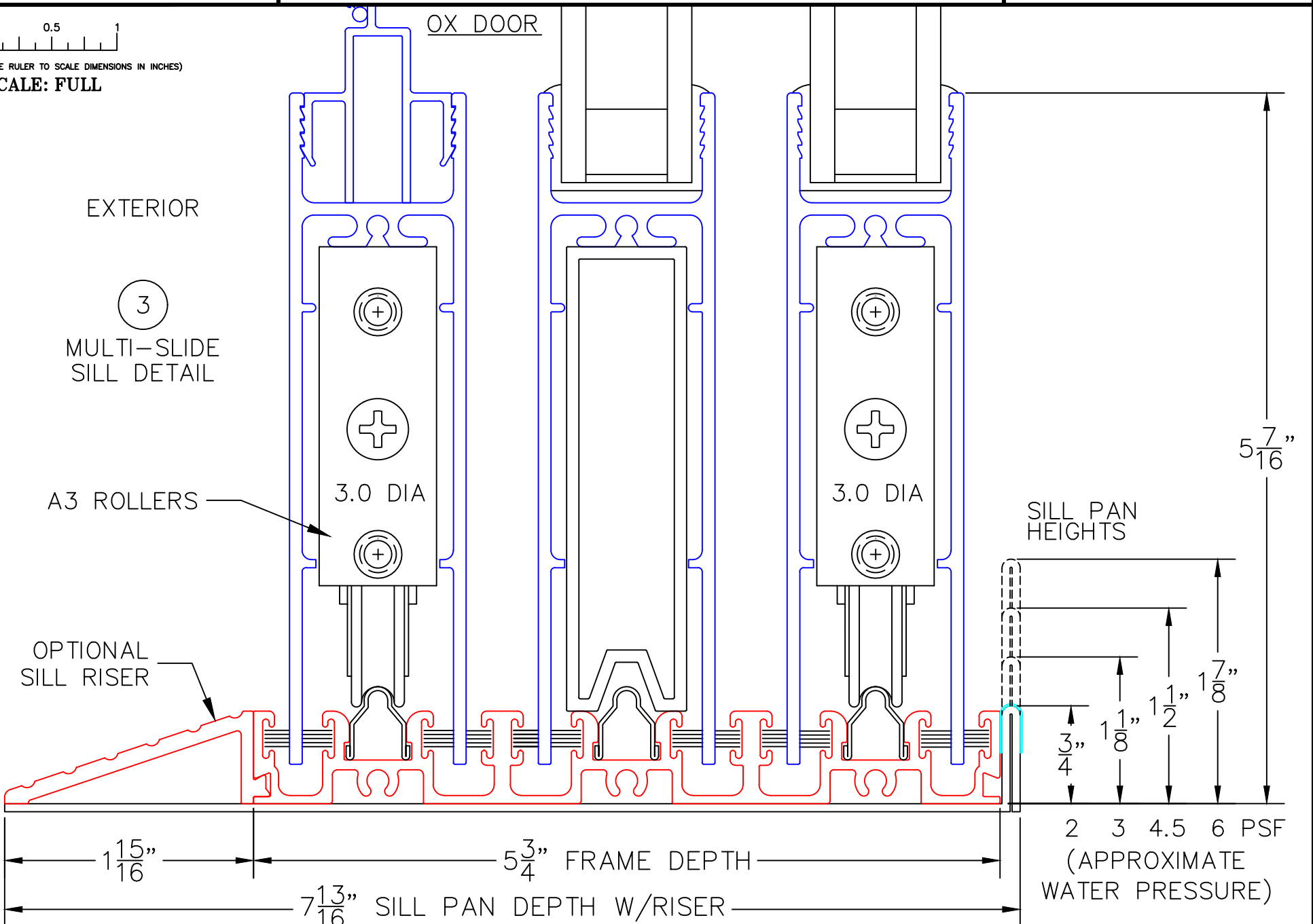
3 ³/₄"
1 ¹/₈"
1 ¹/₂"
1 ⁷/₈"

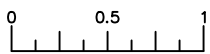
2 3 4.5 6 PSF
(APPROXIMATE
WATER PRESSURE)

1 ¹⁵/₁₆"

5 ³/₄" FRAME DEPTH

7 ¹³/₁₆" SILL PAN DEPTH W/RISER





(USE RULER TO SCALE DIMENSIONS IN INCHES)

SCALE: FULL

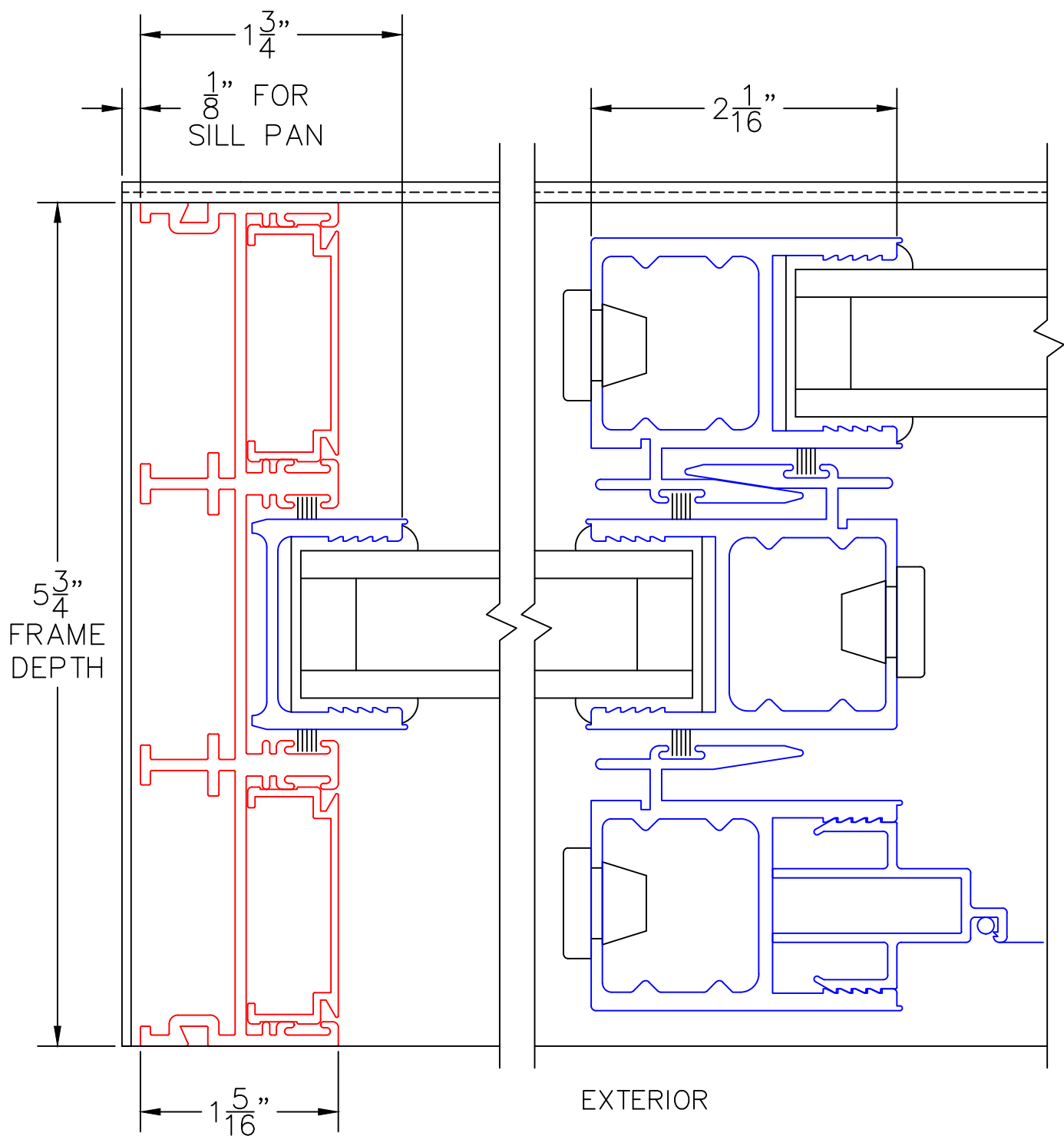
OX DOOR

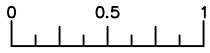
④

FIXED JAMB

⑤

INTERLOCKERS





(USE RULER TO SCALE DIMENSIONS IN INCHES)

SCALE: FULL

OX DOOR

6

LOCK JAMB

$\frac{1}{8}$ " FOR
SILL PAN

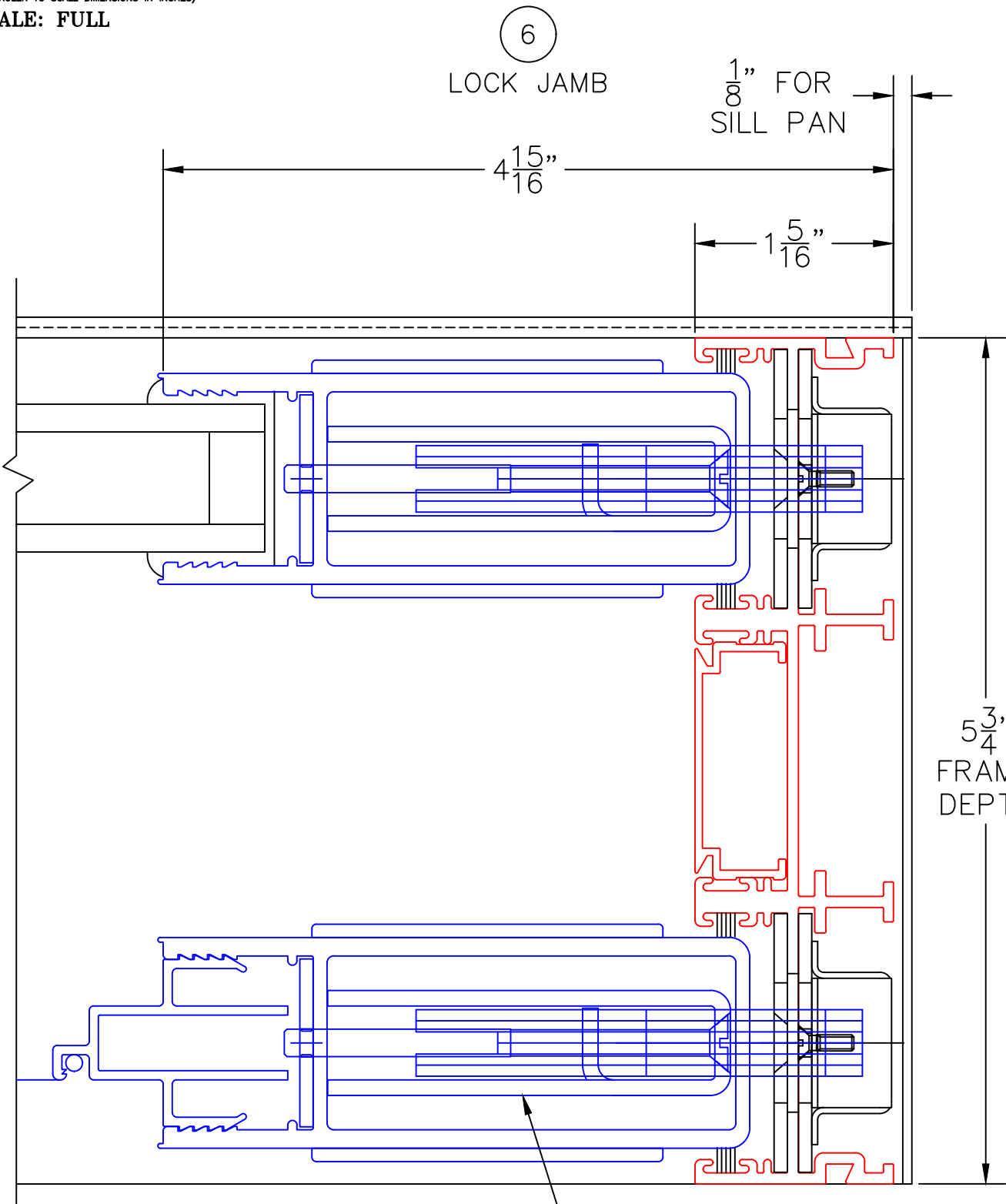
$4\frac{15}{16}$ "

$1\frac{5}{16}$ "

$5\frac{3}{4}$ "
FRAME
DEPTH

EXTERIOR

ARCHETYPE LATCH WITH
FLUSH PULL HANDLES



0 0.5 1
(USE RULER TO SCALE DIMENSIONS IN INCHES)
SCALE: FULL

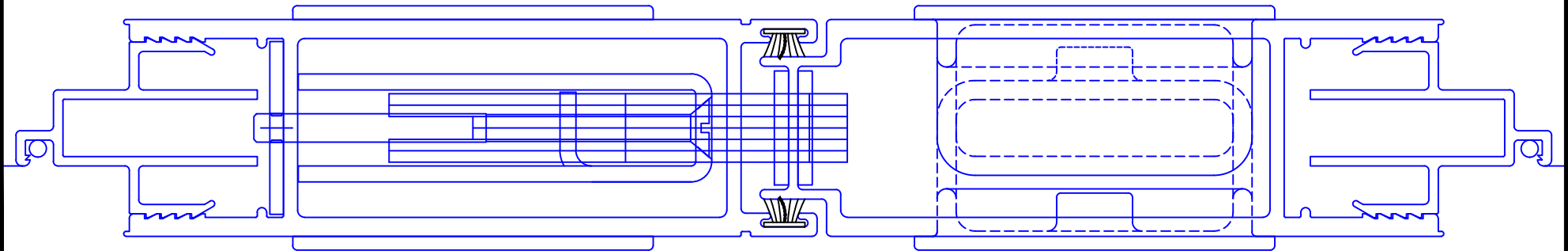
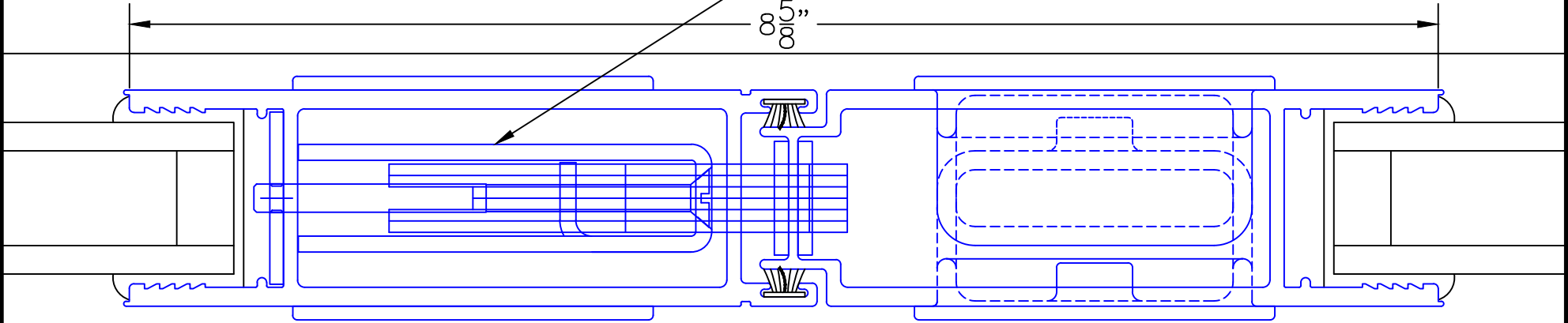
OXIXO DOOR

9

MEETING STILES

ARHCETYPE LATCH WITH
FLUSH PULL HANDLES

8 5/8"



EXTERIOR