

IMPACT RATED "THERMAL FRAME" FIXED WINDOW

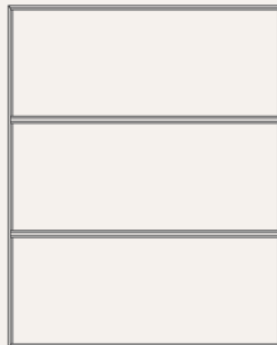


TYPICAL CONFIGURATIONS	DESIGN PRESSURE	MAXIMUM SIZES
<ul style="list-style-type: none"> • 000-GTF, 0/0/0-GTF, 00-GTF, 00/00-GTF 	<p>±65.0 PSF*</p>	<ul style="list-style-type: none"> • Unlimited Inline: 42" max panel width x 96" frame height • Unlimited Stacked: 96" frame width x 42" max panel height • Single Fixed: 60" frame width x 120" frame height • Double or Intersecting: 120" frame width x 120" frame height

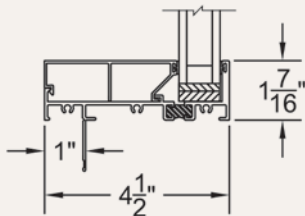
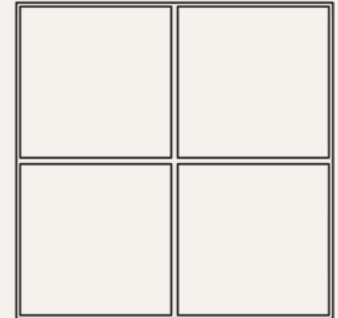
ELEVATION VIEW:
000-GTF
CONFIGURATION



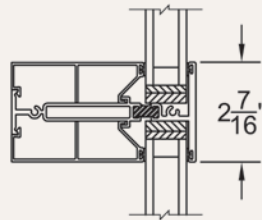
ELEVATION VIEW:
0/0/0-GTF
CONFIGURATION



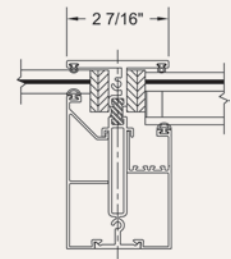
ELEVATION VIEW:
00/00-GTF
CONFIGURATION



SILL



HORIZONTAL TDL



VERTICAL TDL

*Varies based on configuration.





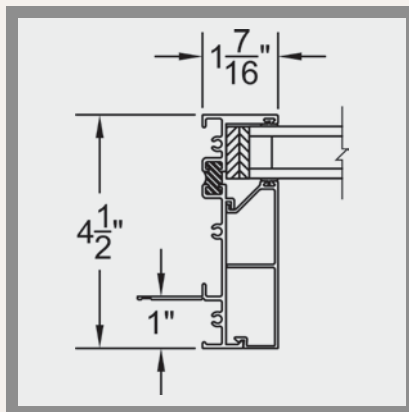
DESIGN NOTES

- Sleek sightlines.
- Design layout freedom.



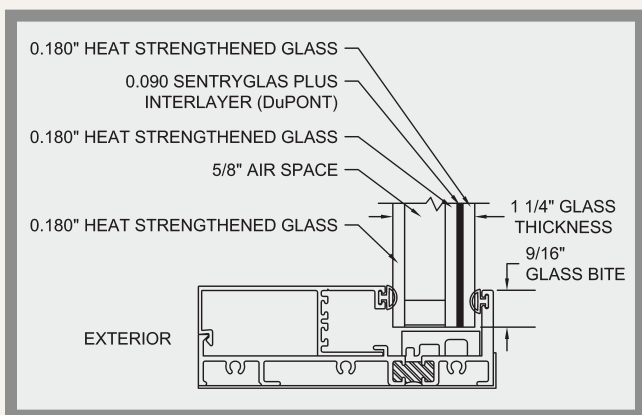
Storefront Design:

Designers want the hard lines seen in typical storefront but shudder at the thought of using commercial products for a variety of reasons. Our Series 3800-T fixed window system is the answer. It has similar designs as storefront but NONE of the downfalls, such as field drilled weep holes.



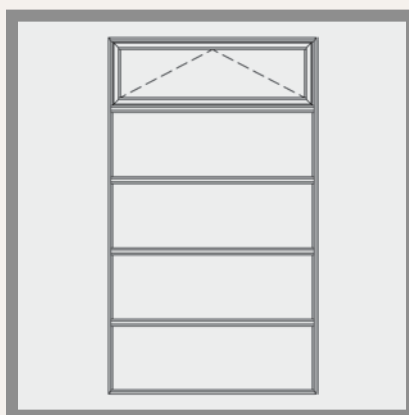
Sleek Sightlines:

The jamb-glass dimension of the Series 3800-T is a slender 1-7/16\".



Glazing Type:

The Series 3800-T was tested and certified using a 1.25" overall insulating laminated glass that includes a DuPont™ SentryGlas® Plus innerlayer.



Window Insert Option:

Series 250-T casements and awnings can be inserted into the Series 3800-T system in lieu of glass. The elevation above provides an example configuration. Please see pages 11-12 for additional information and architectural details.