

The **Archetype** Cam Handle with Strike was designed for the Fleetwood Series 450-T Casement/Awning window system.

### Proprietary Design

The Archetype Cam & Strike were designed and engineered exclusively for Fleetwood products and are not available elsewhere on the market.

### Stainless Steel Cam

The Archetype Cam Handle is crafted from cast 316 stainless steel. Type 316 is a marine-grade stainless steel that is resistant to reactions such as corrosion and maintains its strength at elevated temperatures.

### Concealed Fasteners

The lever and base were thoughtfully shaped for minimal presentation and comfortable operation. Additionally, our Engineers fashioned a method to conceal the attachment screws.

### Stainless Steel Strike

The Archetype Cam Strike is also crafted from cast 316 stainless steel. Unlike every other cam strike on the market the Archetype accepts a black Delrin insert which is hidden when the cam is closed but avoid typical scraping damage on black hardware

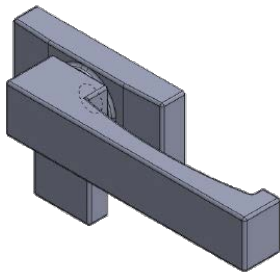
### Extraordinary Process

The exposed surfaces of both cam and strike are finished with a unique process called Electropolishing for a [Lifetime Warranty](#) in coastal applications. It is an electrochemical process that removes material from a metallic surface, reducing the roughness by levelling micro-peaks and valleys, while also improving the finish.

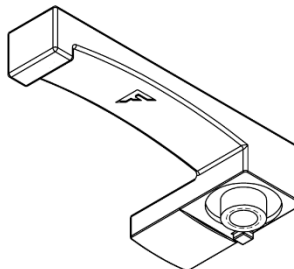
### Brushed or Black Finish

The Archetype Cam & Strike are offered in a brushed texture (fine bristle sanding that leaves a non-reflective surface) or black powder coated.

Cam Handle w/ Base



Cam Handle Only



Strike Plate

