

**SERIES 530-T**

**“THERMAL FRAME” HORIZONTAL SLIDER & SINGLE HUNG**



**TYPICAL CONFIGURATIONS**

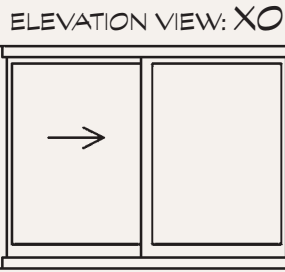
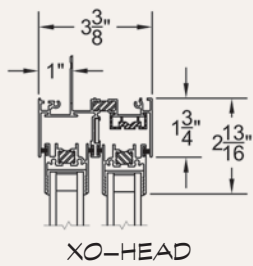
- XO, OX, XOx, SH.
- Maximum Panel Width: Horizontal Slider: 78"; Single Hung: 158".
- Maximum Panel Height: Horizontal Slider: 90"; Single Hung: 145".
- Partner Products: Series 530-T Glazed to Frame.

**EXAMPLE SHGC**

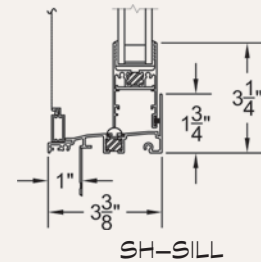
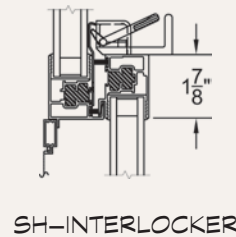
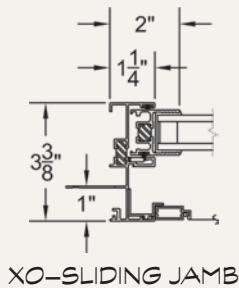
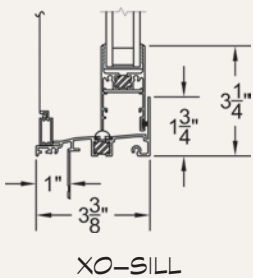
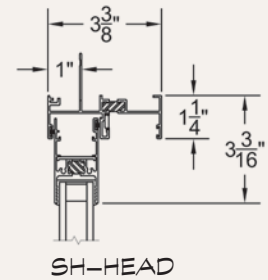
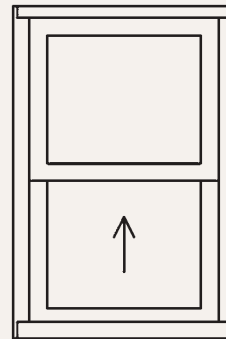
<sup>2</sup>NFRC: 0.21  
<sup>3</sup>S.P.A.: 0.23

**EXAMPLE U-FACTOR**

<sup>2</sup>NFRC: 0.36  
<sup>3</sup>S.P.A.: 0.29



ELEVATION VIEW: SH



<sup>1</sup>Max width and height are not necessarily available in combination.

<sup>2</sup>Specimen size: Nom. 59" x 47".

<sup>3</sup>Simulated Performance Alternative size: 144" x 90" XO using Cardinal 366-i89/Argon glass.





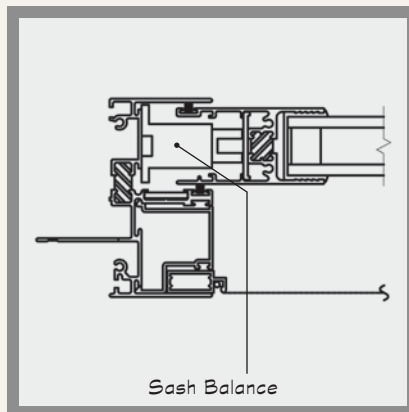
## DESIGN NOTES

- Large sizes.
- Concealed thermal material.



### Designer Latch:

Every Fleetwood sliding window comes standard with our own proprietary latch. Made in the USA and constructed of #316 stainless steel, this latch has no rival. It is a self-latching design so you only need close the window to be sure it is securely locked. Available in either a brushed stainless or painted black. If a custom color is desired, it can be easily removed from the window and sent to a local finisher.



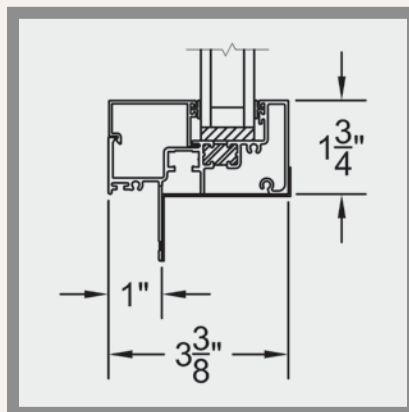
### Side Load Single Hung:

The Series 530-T single hung incorporates a similar balance system as the Series 250 single hung. These *block and tackle* sash balances are much more stable than the adjustable spiral balances often found in cheaper window products. Typical residential windows offer flashy features such as tilt and clean but that feature dramatically alters the simple architectural lines of the extrusion. The 530-T, as well as the 250 single hung, both provide clean lines only offered by concealed balances.



### Tandem Rollers:

The Series 530-T rolling system is certainly unique in the market. It is the only sliding window with an adjustable tandem roller. Even more, the roller housing is made of stainless steel and nylon tires so the aluminum and finish are not damaged.



### Center Glaze Look:

The Series 530-T operable windows are accompanied by a fixed system of the same frame depth. Some customers prefer the 530-T fixed window because the glazing is more centered. Notice the factory supplied sill pan.