

The **Archetype** and ¹**Archetype Narrow** locking systems were designed for Fleetwood sliding door products. Consider the following design features:

1. **Archetype** Actuator
2. **Archetype** Recessed Pull
3. **Archetype** Second Latch Feature
4. **Archetype Narrow** Actuator & Pull
5. Maximum Security Stainless Steel Latch
6. Reinforced Adjustable Strike
7. Optional Actuator Only
8. Optional Lock-Out (During Construction)
9. Optional Keyed Lock
10. Optional **Archetype** ADA Lever
11. Optional Edge Pull

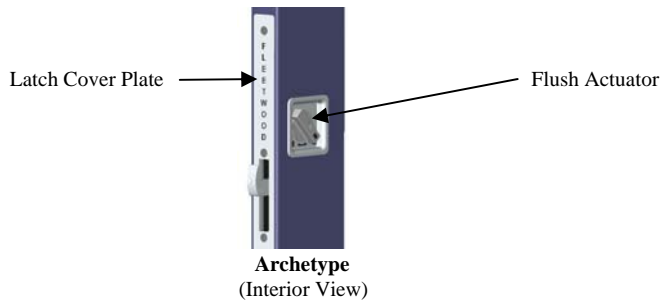
1. **Archetype Actuator**

The **Archetype** Locking System is engaged by turning the flush actuator either left or right (see below). The actuator is made of #316 stainless steel, then finished with a subtle brushed surface. The final process treats the exposed surfaces to electro-polishing for optimum corrosion protection. (Black powder coat paint is optional.)

The flush design allows the lead panel to slide past adjacent panels or into a pocket wall.

The face of the actuator indicates if the door is locked or unlocked.

The Fleetwood branded latch cover plate completes the package.



2. **Archetype Recessed Pulls**

The Archetype Locking System comes standard with interior and exterior pulls (shown below). Each handle is recessed for the deepest pocket possible to allow for comfortable operation. Each pull is finished the same as the actuator.



Interior Pull



Exterior Pull



Side View Cross Section

¹ The Archetype Narrow comes standard on all Entry Level sliding door products (Series 1070, 1050 & 1000.) In these products the recessed handles, actuator and pulls are made of brass base material and powder coated with a silver paint.

3. **Archetype Second Latch Feature**

The **Archetype** is offered with a second latch on non-thermally broken multi-slide doors exceeding 96” in height. The second latch is engaged the same time that the primary latch is operated.

(Not available on the **Archetype Narrow**.)



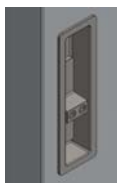
4. **Archetype Narrow Actuator & Pull**

The **Archetype Narrow** locking system is engaged by moving the flush actuator either up or down within the interior pull. The actuator is made of #316 stainless steel and then finished with a subtle brushed surface. The final process treats the exposed surfaces to electro-polishing for optimum corrosion protection (Black powder coat paint is optional.)

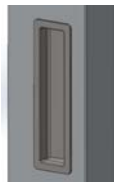
As with the **Archetype** actuator, the flush design allows the lead panel to slide past adjacent panels or into a pocket wall.

The face of the actuator indicates if the door is locked or unlocked. {COMING SOON: The face screws will be concealed.}

The Fleetwood branded latch cover plate completes the package.



Interior Flush Actuator & Pull



Exterior Pull



Latch Cover Plate

5. **Maximum Security Stainless Steel Latch**

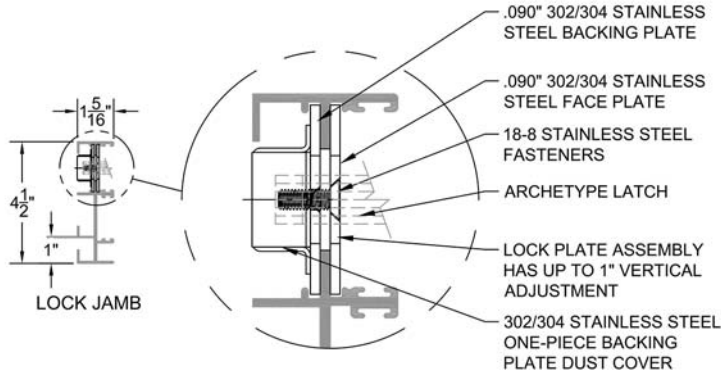
Both the **Archetype** and **Archetype Narrow** locking systems utilize a 6-ply, laminated, stainless steel hook latch for unparalleled security. Though a seemingly basic operation, the patent was granted on the unique mechanics transitioning from the actuator to the latch. The system is so strong it passed the HVHZ hurricane impact testing that exceeded a 200 mph



wind velocity and exceeds 800 lbs. to surpass government forced entry requirements.

6. Reinforced Flush Adjustable Strike

The **Archetype** strike plate consists of superior components, making it an ideal complement to the **Archetype** and **Archetype Narrow** latching systems.

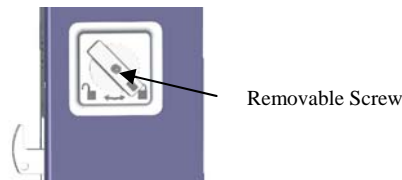


7. Optional Actuator Only

One option on the **Archetype** locking system is to purchase only the actuator. The depth of the escutcheon allows a modest area for grasping, or custom pulls can be applied.

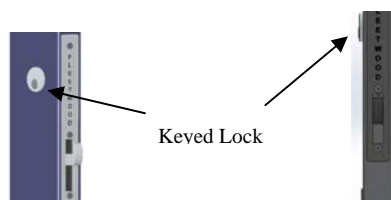
8. Optional Lock-Out Feature

Both **Archetype** and **Archetype Narrow** locking systems allow the owner to remove the actuators once in a locked position. This has particular benefits during construction as it dissuades other trades from using the sliding doors as a passageway.



9. Optional Keyed Lock

Both **Archetype** and **Archetype Narrow** locking systems offer the option of a relatively flush exterior keyed lock. The cylinder is a 5-pin Schlage that can be keyed alike for multiple doors are on the same project.

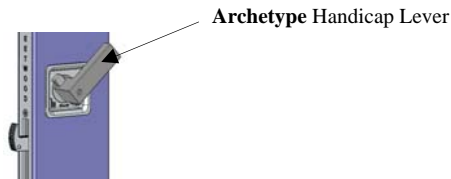


Exterior View

Side View
Cross Section

10. Optional Archetype Handicap Lever

The **Archetype** Handicap Lever is to help those that may have problems gripping the standard actuator. Once attached, the 3-3/8" long lever stands proud of the door lead stile by 3/4" and only requires 60 degrees of rotation to operate the latch. The lever is shipped separately and can quickly be installed. It is offered in brushed stainless steel or black painted stainless steel. (Not available on the **Archetype Narrow**.)



11. Optional Edge Pull

All pocket sliding doors come standard with Fleetwood's proprietary Edge Pull. The pull is mortised into the edge of the lock stile, just a few inches below the latch cover plate. The pulls are made of #316 cast stainless steel and come standard with a lifetime adjustable screw to ensure proper tension.

