

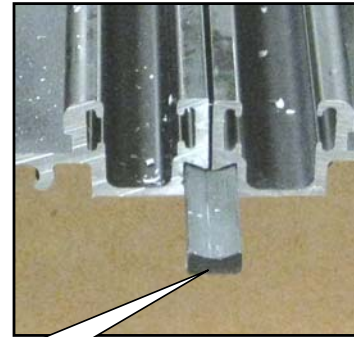


FLEETWOOD WINDOWS & DOORS

Track Assembly - Field Splice Procedure



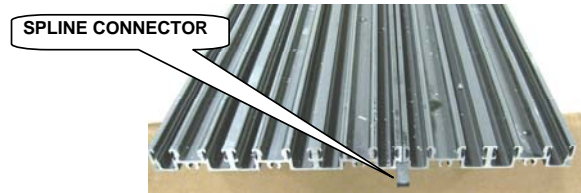
Step 1) On flat level surface, layout Sill Tracks, where one short, and one long track will allow an off-set assembly allowing a mechanical joint. (AS SHOWN)



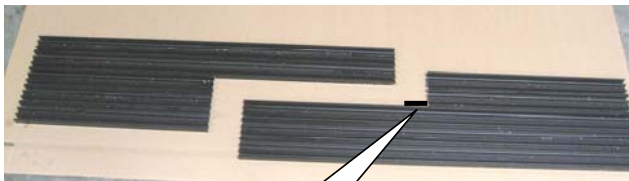
SPLINE CONNECTOR

Step 2) Insert Spline Connector (AS SHOWN) connecting the Sill Tracks.

NOTE: NO NEED TO CUT SPLINE CONNECTOR



SPLINE CONNECTOR



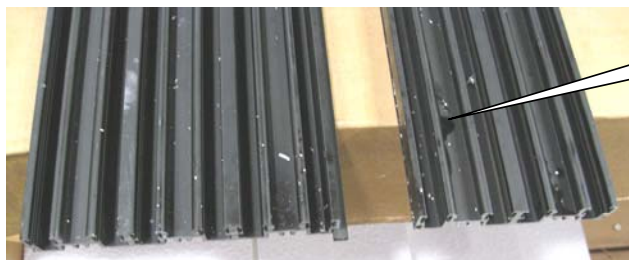
SPLINE CONNECTOR

Step 3) Repeat Step 1 for the second set of Off-set Tracks (AS SHOWN)

NOTE: YOU CAN USE THE SAME SPLINE CONNECTOR FROM 1B IF IT IS LONG ENOUGH, INSERT ADDITIONAL SPLINE IF NEEDED.



NOTE THAT THE SPLICE WILL BE OFF SET



INSERT PROVIDED SCREWS HERE!

Step 4) Fasten Tracks together - with screws provided (#8 x 3/4) (HOLES ARE PREDRILLED)



Finished Assembled Track

Step 5) Assemble HEAD Tracks similar, without spline connector)