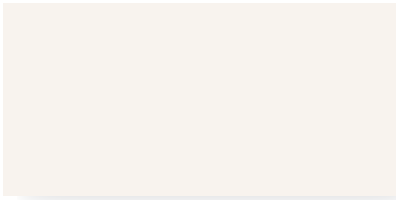


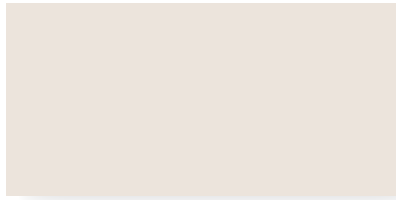
PAINTED ALUMINUM FINISHES

12 OF OUR CUSTOMERS' FAVORITE COLORS

KYNAR 500® (KYNAR 70% STANDARD 2-COAT)



WHITE #10



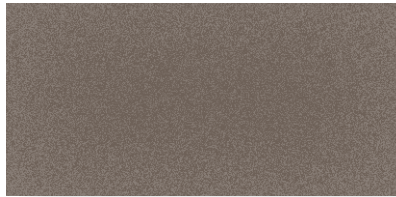
BONE WHITE



BEIGE



LIGHT SEAWOLF



MEDIUM BRONZE



STATUARY BRONZE



CHARCOAL GRAY



BLACK BEAUTY



RICH BLACK

KYNAR 500® SPECIALTY COATINGS (KYNAR 70% EXOTIC)



SILVER, MICA 2-COAT



BRITE COPPER, METALLIC 4-COAT



CHAMPAGNE SUNSTORM, MICA 2-COAT

THOUSANDS OF COLORS!

THE PROCEDURE FOR COLOR SELECTION IS EASY

SELECTING A FAVORITE COLOR

First, select a “Favorite Color” from the front of this brochure. During final confirmation of your order we will ask for your approval on an aluminum color panel. The colors on this brochure are not painted on aluminum and will therefore vary slightly.

SELECTING ANOTHER COLOR

Any store that sells paint will display catalogues of paint colors. Under each color you will notice the letters “UC” followed by a number. Give that name and number to our dealer and we will take it from there. The “UC” is the recipe which is on file. With that recipe we mix the paint that matches the color you chose. We will then furnish color samples for you to approve so you are certain it is the color and gloss you want.

SELECTING A COLOR YOU CREATED

If you prefer a color that does not exist then you can create your own! Our computers will match the color you provided. We will then provide an aluminum color panel for your final approval.

DON'T BE FOOLED

Some aluminum products are painted with “powder coating” but do not be fooled into thinking this is as good as Kynar 500®. Some powders consist of the same high performance pigmentation as Kynar 500® but most do not. Consider this fact: there are only a handful of licensed applicators to spray Kynar 500® but there are thousands of powder coaters.

Kynar 500® is a registered trademark of Elf Atochem North America, Inc.

Minimum of 70% fluoropolymer resin for premium performance in solid colors. Two-coat system: Corrosion inhibiting primer at 0.2 mil and durable high performance topcoat at 1.0 mil. Minimum total dry film thickness of 1.2 mil.

• Hardness: F minimum. • Meets or exceeds AAMA 2605. • Gloss: Medium (25–35 @ 60).



1 Fleetwood Way, Corona, CA 92879
TELEPHONE 800.736.7363 | www.FleetwoodUSA.com