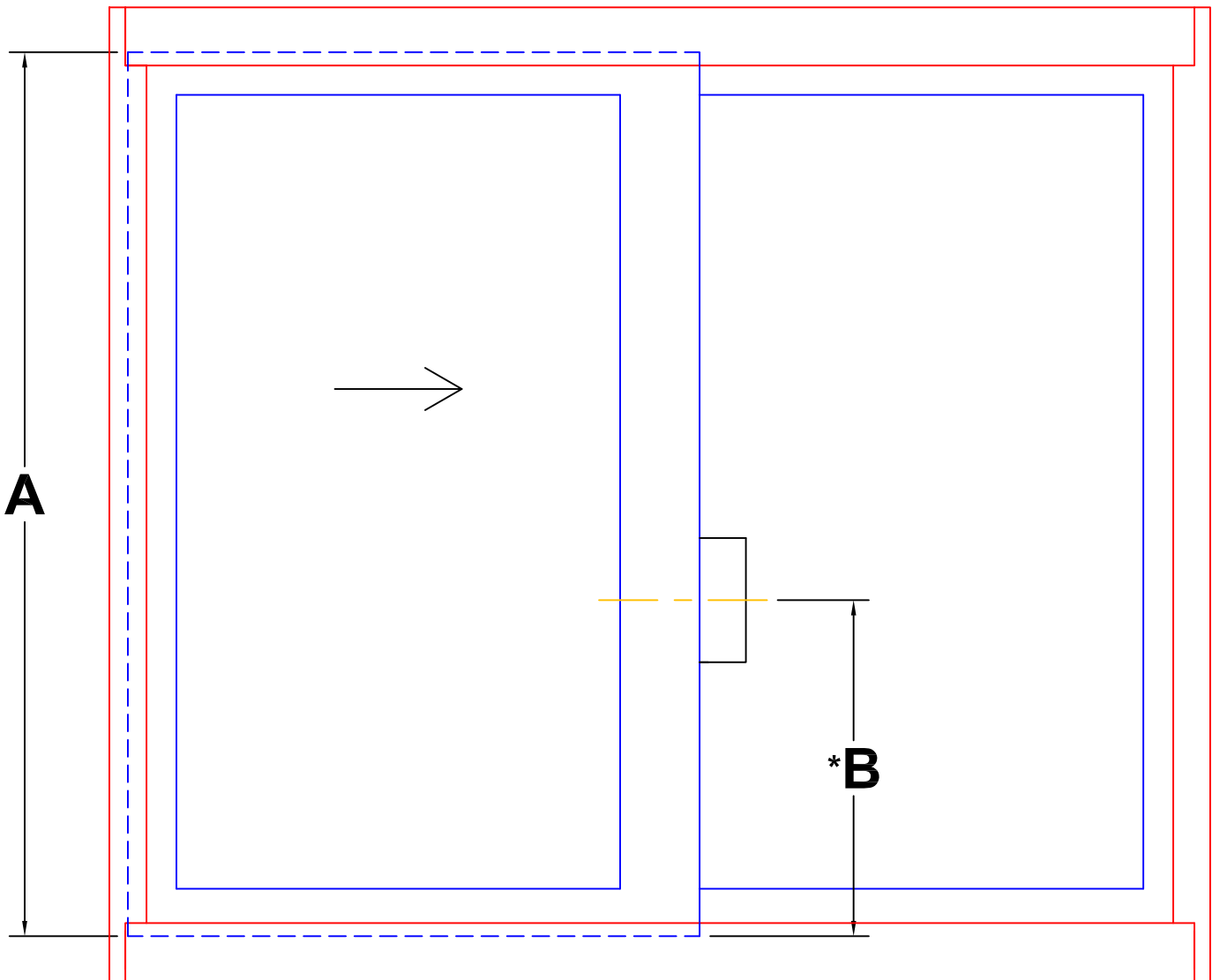


SERIES 250 and SERIES 530-T HANDLE LOCATIONS
EXAMPLE SHOWN: SERIES 250-T OX AS VIEWED FROM INTERIOR



***B** = BOTTOM OF PANEL TO CENTERLINE OF HARDWARE

A PANEL HEIGHT	B
10 15/16" & UNDER	CENTERED
11" TO 15 15/16"	6"
16" TO 21 15/16"	8"
22" TO 29 15/16"	10"
30" TO 65 15/16"	17"
66" & OVER	24"

NOTE: HANDLE HEIGHT MAY VARY ON WINDOWS CONTAINING EXTERIOR APPLIED GRIDS