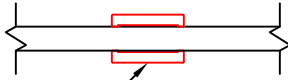


SINGLE GLAZING

3/4" SIGHTLINE

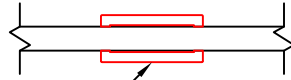
SL-1A



Part No. 3211

1 1/16" SIGHTLINE

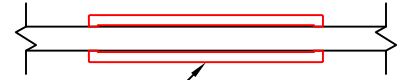
SL-2A



Part No. 3517

2 7/16" SIGHTLINE

SL-3A



Part No. 3718

SL-1B

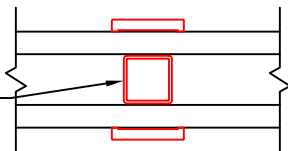


STEEL LOOK
(Part No. 3210)

INSULATED GLAZING

3/4" SIGHTLINE

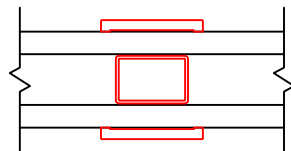
SL-1C



SHADOW BAR

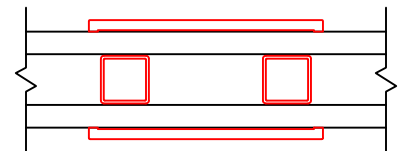
1 1/16" SIGHTLINE

SL-2C

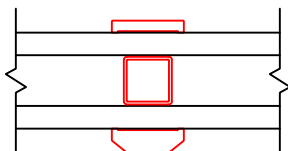


2 7/16" SIGHTLINE

SL-3C



SL-1E



STEEL LOOK

NOTES (I.G. UNITS):

- SHADOW BAR MAY RATTLE.
- SHADOW BAR ONLY AVAILABLE IN BLACK.
- AIR SPACE CHOICE: 3/8", 1/2", 7/16", 5/8", AND 3/4".
- AVAILABLE ON MOST PRODUCTS.